

# 3 Bolt EMB to 4 Bolt EMB Conversion



*This guide will walk you through the process of removing a 3 bolt EMB (typically found on 2021 and older Icon carts) and replacing it with a new style 4 bolt EMB (found on the 2022 and newer Icons).*

## Tools you will need:

- Floor jack and jack stand
- 19mm socket
- Metric Allen Wrench set  
*(SAE will work but risks stripping heads)*
- WD-40
- Snap ring pliers



# Procedure:

Step 1) After jacking up your cart and securing it on jackstands, remove the passenger side rear wheel.

Step 2) Begin removing the 3 mounting bolts for the EMB, leaving the 2 adjustment bolts in.

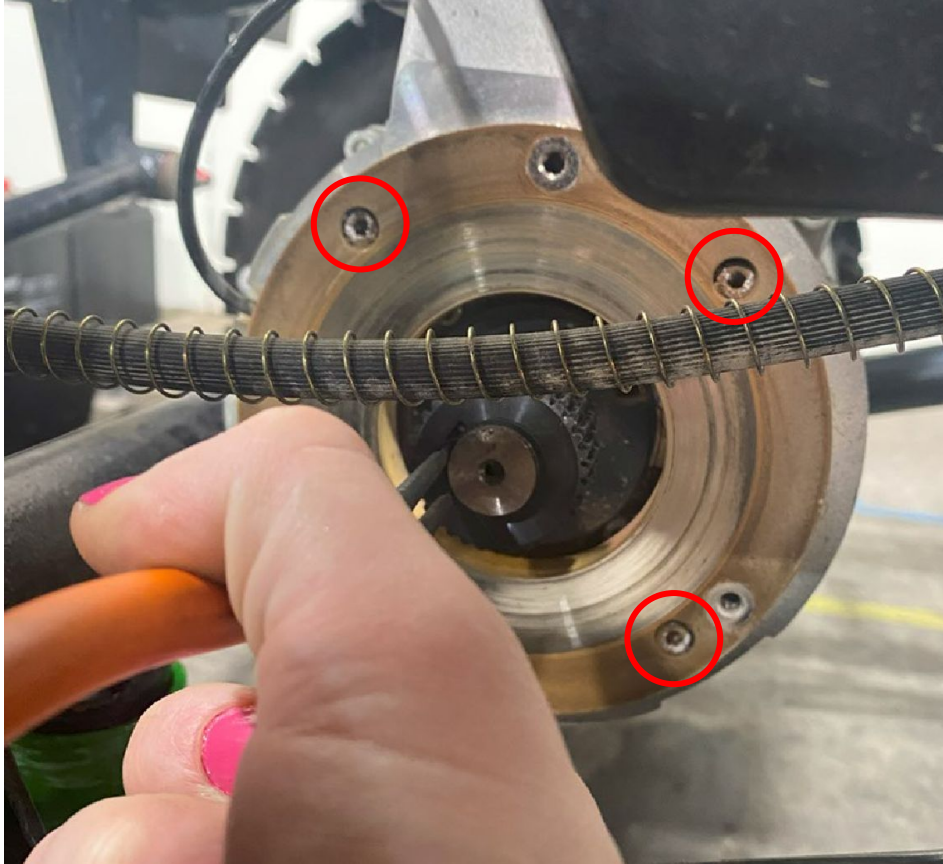


# Procedure (cont)



3) Once all 3 bolts have been removed, the EMB can be removed, exposing the gear and brake pad.

# Procedure (cont)



4) With a pair of snap ring pliers remove the snap ring holding the gear in place.

5) Remove gear *You may need to spray it with WD-40 and pry gently.*

6) Remove the 4 allen head bolts holding on the adapter plate. *(circled in red)*

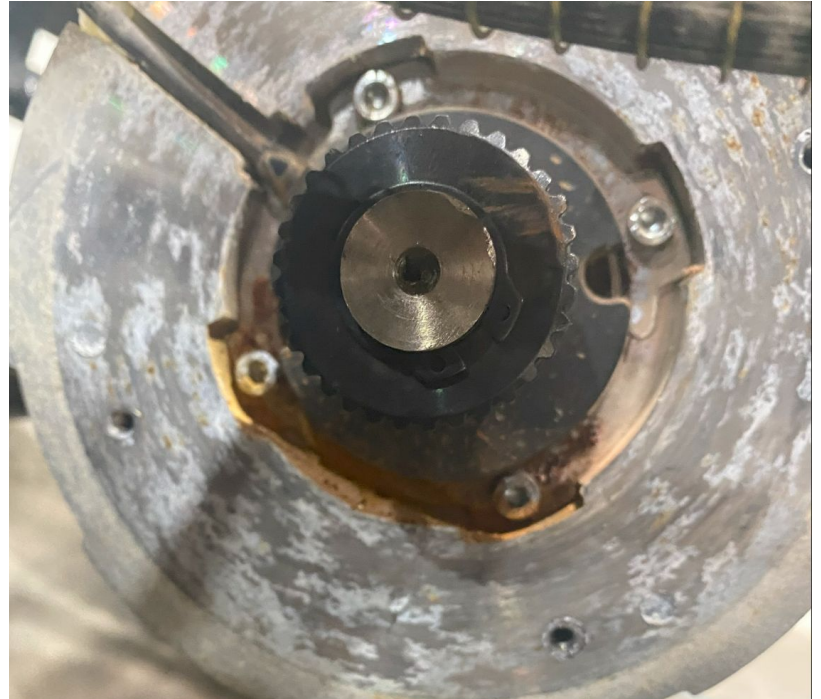
Note: These 4 bolt holes that the plate mounted to are now the 4 mounting points for the new 4 bolt EMB



# Procedure (cont)



7) Install the new gear that was provided with your 4 Bolt EMB and secure it with the snap ring. You may need to tap it on with a mallet.



# Procedure (cont)



6) Align the splines of the gear with the 4 bolt EMB and work it on, tapping lightly with a mallet if necessary.

7) Once the EMB is seated onto the gear, align the 4 emb bolts up with the mounting holes. *This can be done by rotating the EMB while pushing the bolt in with an allen wrench.*

# Procedure (cont)

8) Tighten all 4 bolts until they are snug.

9) Swap connector from old EMB and plug into the harness

10) Remount wheel and tighten lugs to 65 ft lbs

