



EPIC E20FX ENCLOSURE INSTALLATION INSTRUCTIONS

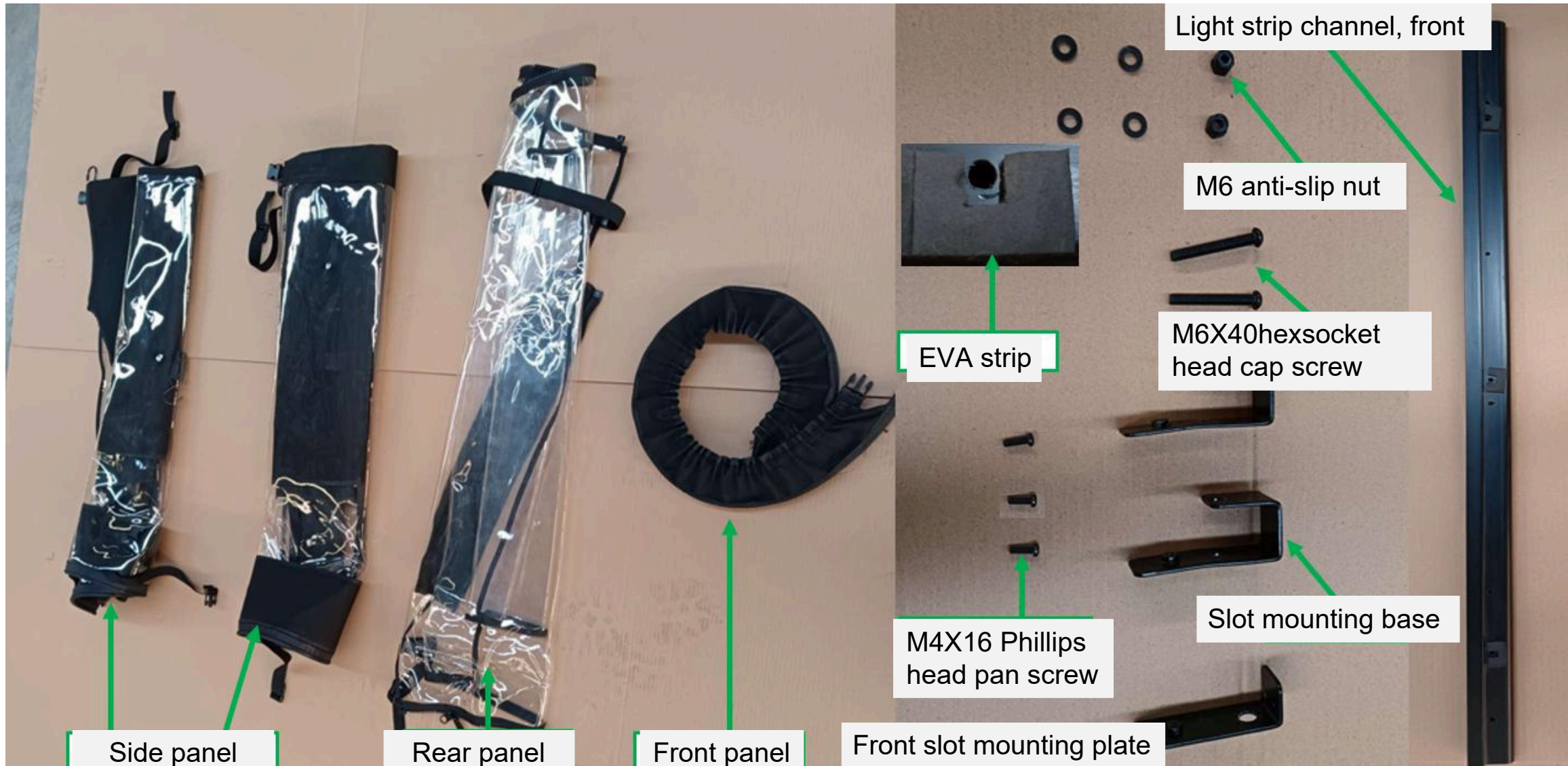
Revenge Golf Cart Parts & Accessories

1. Vehicle Image



2. Material Preparations

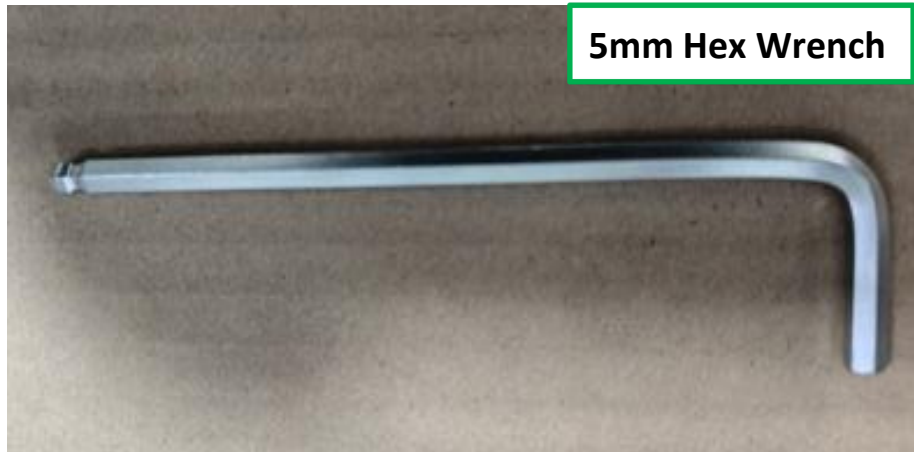
Open all material packaging bags. Arrange individual parts according to shape and size.



3. Tools



5mm Hex Wrench



13mm Open-End Wrench



Electric Tightening Tool



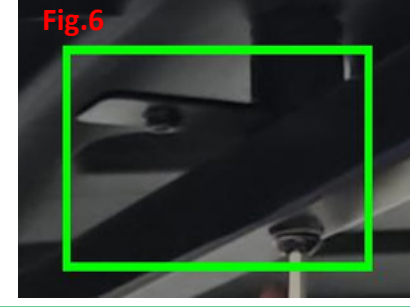
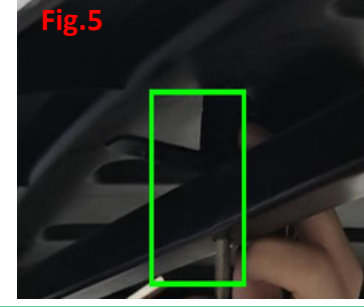
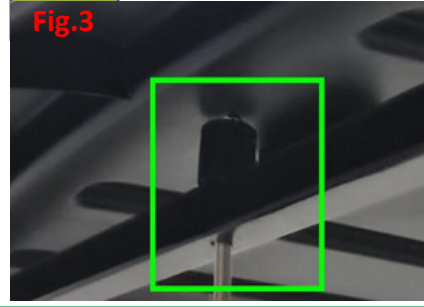
Phillips Head Screwdriver Bit



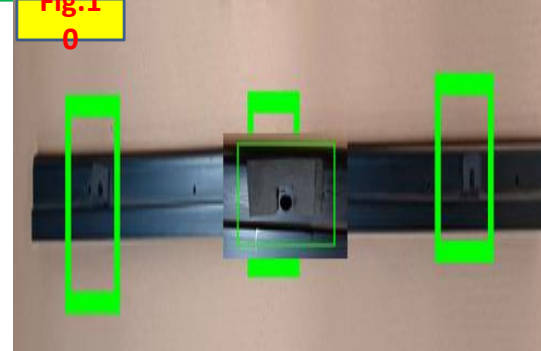
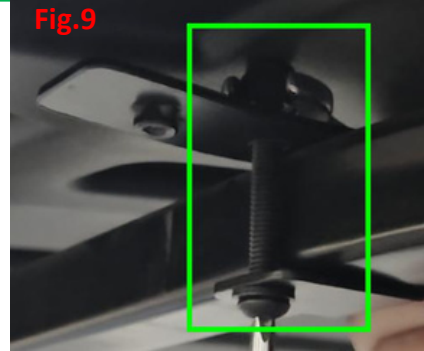
8mm Open-End Wrench



4. Mount the Channel with the Canopy



Step 1: Pre-install the front mounting plate. Use a 5mm hex wrench and a 13mm open-end wrench to remove the M8*70 hex socket screws on the headliner. Refer to Figures 1, 2, and 3. Then reinstall the front mounting plate. Refer to Figures 4, 5, 6, and 7.



Step 2: Pre-install the mounting brackets. Insert the left and right mounting brackets into the square tube of the headliner liner. Then, use an M6*40 hex socket flathead screw to pre-tighten the M6 nuts through the mounting holes of the mounting brackets. Refer to the green boxes in Figures 8 and 9. (Note: Do not tighten yet; adjust left and right as needed)

Step 3: Pre-installation of the LED strip panel slot: First, attach the die-cut EVA strip, referring to the green box in Figure 10.

Step 4: Assembly and fixing of the LED strip panel slot to the slot fixing seat: Align the mounting holes of the slot fixing seat at both ends with the mounting point of the panel slot. Use an electric tightening tool + Phillips head screwdriver + M4*16 Phillips head screws to tighten and fix the LED strip panel slot. Then use an electric tightening tool + Phillips head screwdriver + 8mm open-end wrench to tighten and fix the slot fixing seat, referring to the green box in Figure 11.

5. Pre-install Rear Panel

Fig.1



Step 1: Prepare the rear panel, referring to Figure 1.

Fig.2



Step 2: Wrap the rear panel around the rear horizontal bar of the roof lining and pull the double-sided zipper buckle, referring to the green box in Figure 2.

Fig.3



Step 3: Smooth the rear panel along the inner back of the back panel, operating in the same way on both sides, referring to the green lines in the green box in Figure 3.

Fig.4



Step 4: Tighten the plastic zippers of the rear and side panels. The operation is the same for both sides; refer to the green box in Figure 4.

6. Pre-install Side Panels

Fig.1



Step 1: Align the front end of the side panel with the rear end of the panel channel, referring to the green arrow in the green box in Figure 1. The assembly steps are the same for both sides.

Fig.2



Step 2: Pass the side panel through the panel channel from the rear end to the front end, referring to the green arrow in Figure 2. The assembly steps are the same for both sides.

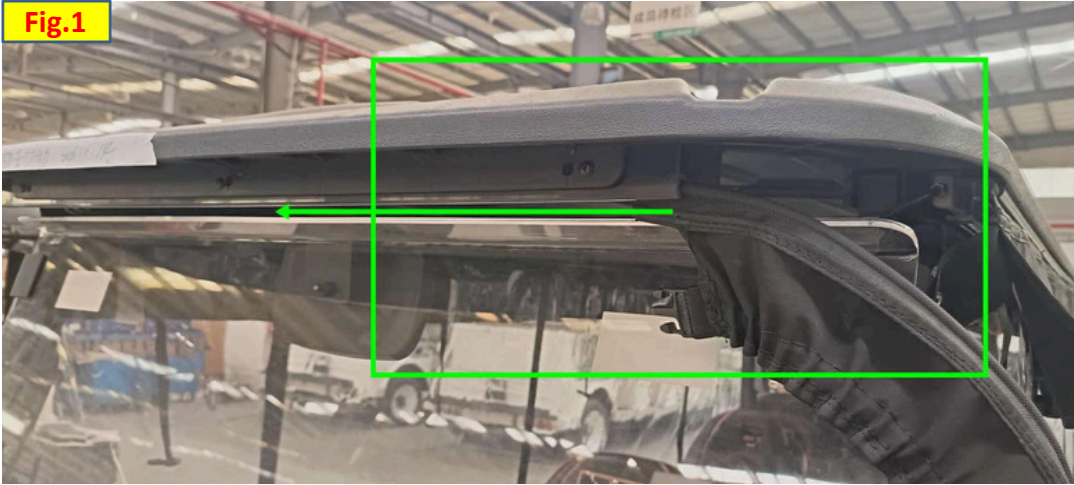
Fig.3



Complete assembly result. The assembly steps are the same for both sides.

7. Pre-install Front Panel

Fig.1



Step 1: Front panel assembly: Align the front end of the front panel with the right front end of the roof panel channel and pass it through the left end, referring to the green arrow in the green box in Figure 1.

Fig.4



Complete assembly result.

Fig.2

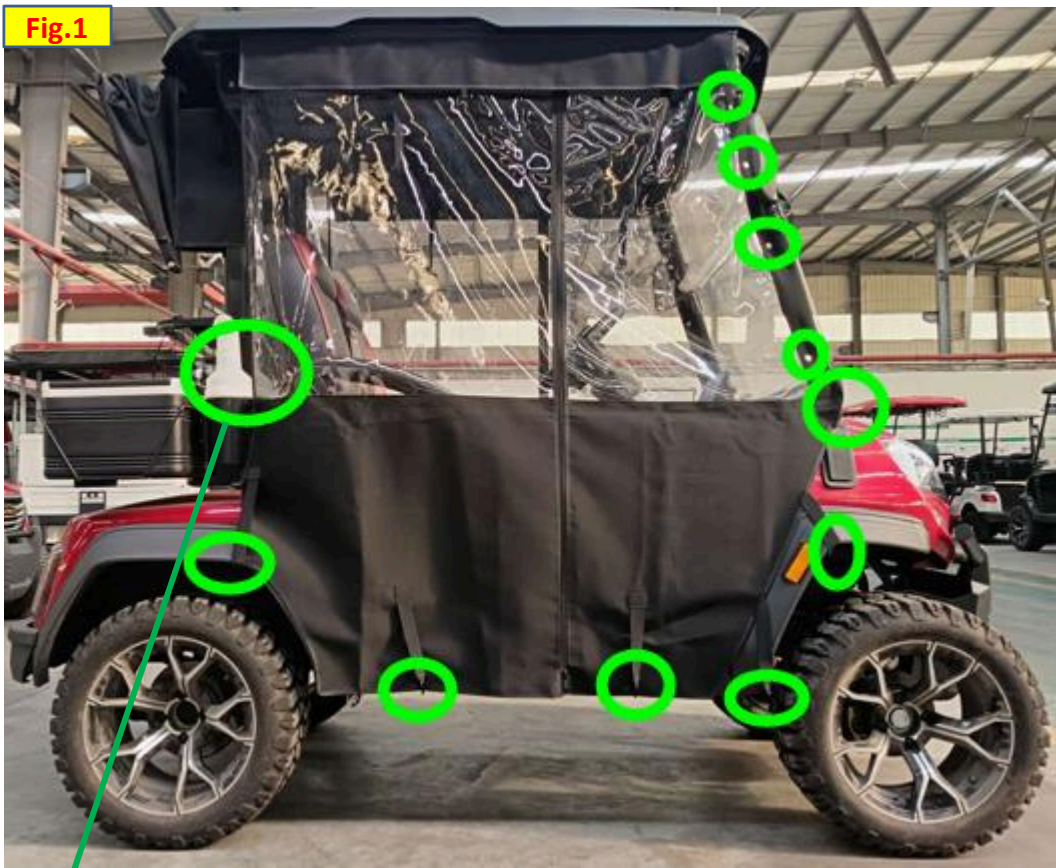


Step 2: Male and female plastic buckle assembly: Insert the male front end of the front panel into the female plastic buckles of the left and right side panels, referring to the green arrows in the green boxes in Figures 2 and 3.

Fig.3



8. Pre-installed Fasteners and Metal Hooks.



Wrap the side panel plastic buckles around the B-post and lock them.

Snap the panel metal buckles to the bottom of the car side skirt.



Snap all the four-pronged female and male panel buckles together.