



EPIC E60FX ENCLOSURE INSTALLATION INSTRUCTIONS

Revenge Golf Cart Parts & Accessories

1. Vehicle images





² Preparation of materials for the entire vehicle's rain curtain

Carefully open all the material packaging bags. Sort the individual parts according to their shape and size.



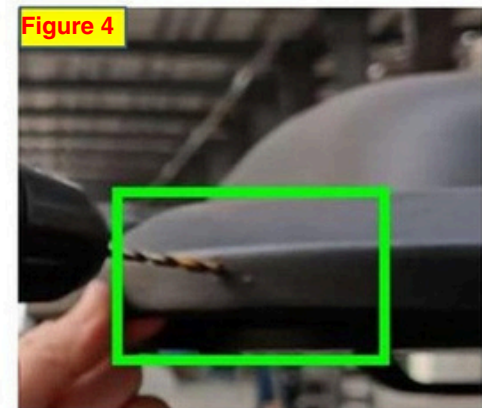
3. Tools prepared before assembly



4. Drilling assembly holes for the canopy and rain curtain guide rails.

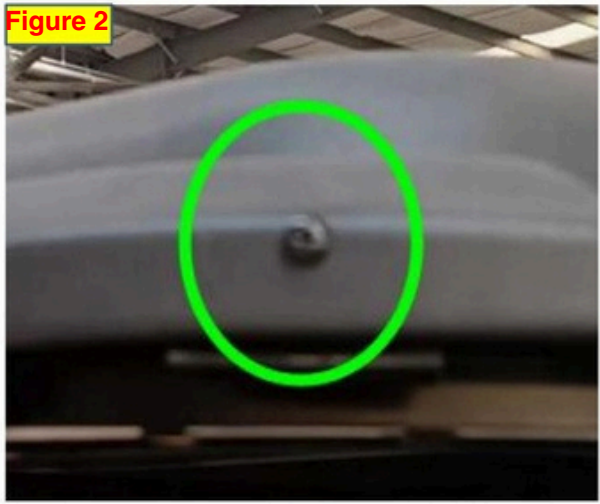


Step 1: Drill holes for the front rain curtain guide rail. Align the front rain curtain guide rail with the front end of the roof and confirm that the protruding lengths on both the left and right ends are consistent. Then use an electric tightening tool with a 7/64" drill bit to drill 3 mounting holes. Refer to the green boxes in Figures 1, 2 and 3. (Note: the protruding lengths on both the left and right ends are consistent.)



Step 2: Drill holes for the corner rain curtain guide rails. Align the left and right corner guide rails with the left and right corners at the rear end of the ceiling, and then use an electric tightening tool with 7/64" drill bit to drill the assembly holes. Refer to the green boxes in Figures 4 and 5.

5. Rain curtain guide rail pre-installed

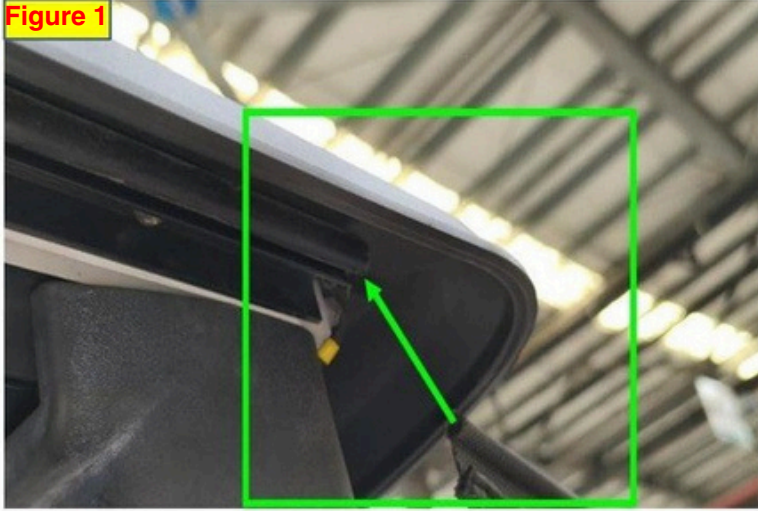


Step 1: Install the front rain curtain guide rail. Align the front rain curtain guide rail with the front end of the roof and confirm that the protrusion lengths on both the left and right ends are consistent. Then, use an electric tightening tool, a long Phillips screwdriver bit, and three 4.8*20 Phillips head pan screws to install and fix it. Refer to the green square in Figure 1.

Step 2: Assemble the corner rain curtain guide rails. Align the left and right corner guide rails with the left and right corners at the rear end of the canopy. Then, use an electric tightening tool, a long Phillips screwdriver bit, and two 4.8*20 Phillips head pan screws to assemble and fix them. Refer to the green circles in Figures 2 and 3.

6. Pre-installed left and right side rain curtains

Figure 1



The first step is to align the front end of the side rain curtain with the rear end of the rain curtain groove, referring to the green box and green arrow in Figure 1. The assembly steps for the left and right sides are the same.

Figure 2



The second step is to pass the side rain curtain through the rain curtain groove from the rear end to the front end, referring to the direction of the green arrow in Figure 2. The assembly steps for the left and right sides are the same.

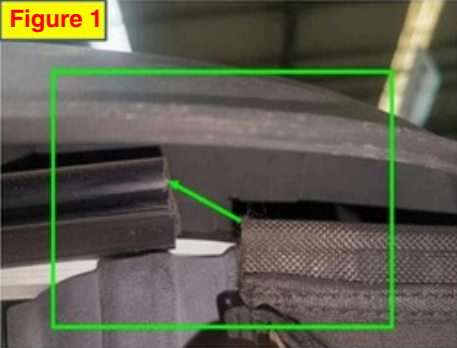
Figure 3



The finished product is shown in the image. The assembly steps are the same on both the left and right sides.

7.Pre-installation of rear rain curtain

Figure 1



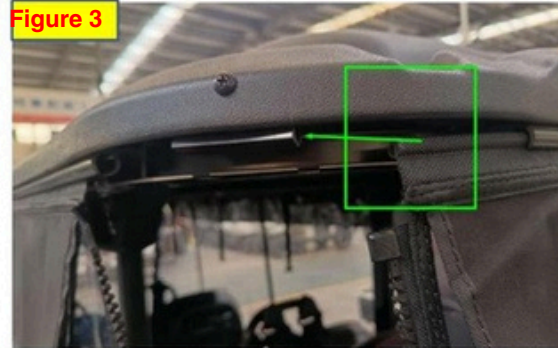
The first step is to align the front end of the rear rain curtain with the car. The front end of the right-side rain curtain channel is shown in Figure 1. Green box with green arrow pointing in the direction of the green arrow.

Figure 2



The second step is to thread the rear rain curtain through the rain curtain groove from the right end. Refer to the direction of the green arrow in Figure 2 for the left end.

Figure 3



The third step is to pass the rain curtain to the left end, and then put the rear rain curtain on. Reference: The rain curtain groove passes through the left corner guide rail. The green arrows in Figures 3 and 4 point in the direction of the arrows.

Figure 4



Figure 5



Figure 6



Figure 7

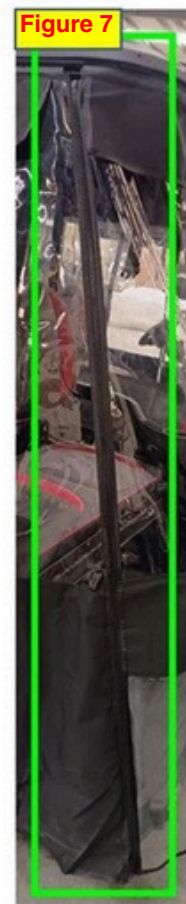


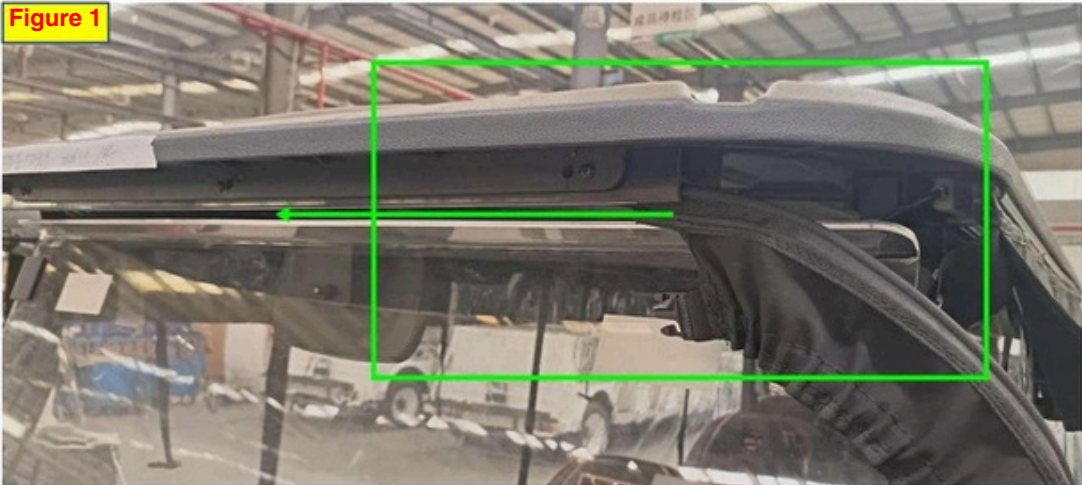
Figure 8



Image showing the finished product after assembly.

Step 4: After assembling the rain curtain and rain curtain rails, connect the (double-sided zipper buckle) on the rear rain curtain to the left and right side rain curtains, referring to Figures 5, 6, and 7. **The direction of the green arrow**

8. Front rain curtain pre-installed



Step 1: Front rain curtain installation: Align the front end of the front rain curtain with the right front end of the overhead rain curtain guide rail, passing it through the left end. Refer to the green box and green arrow direction in Figure 1.



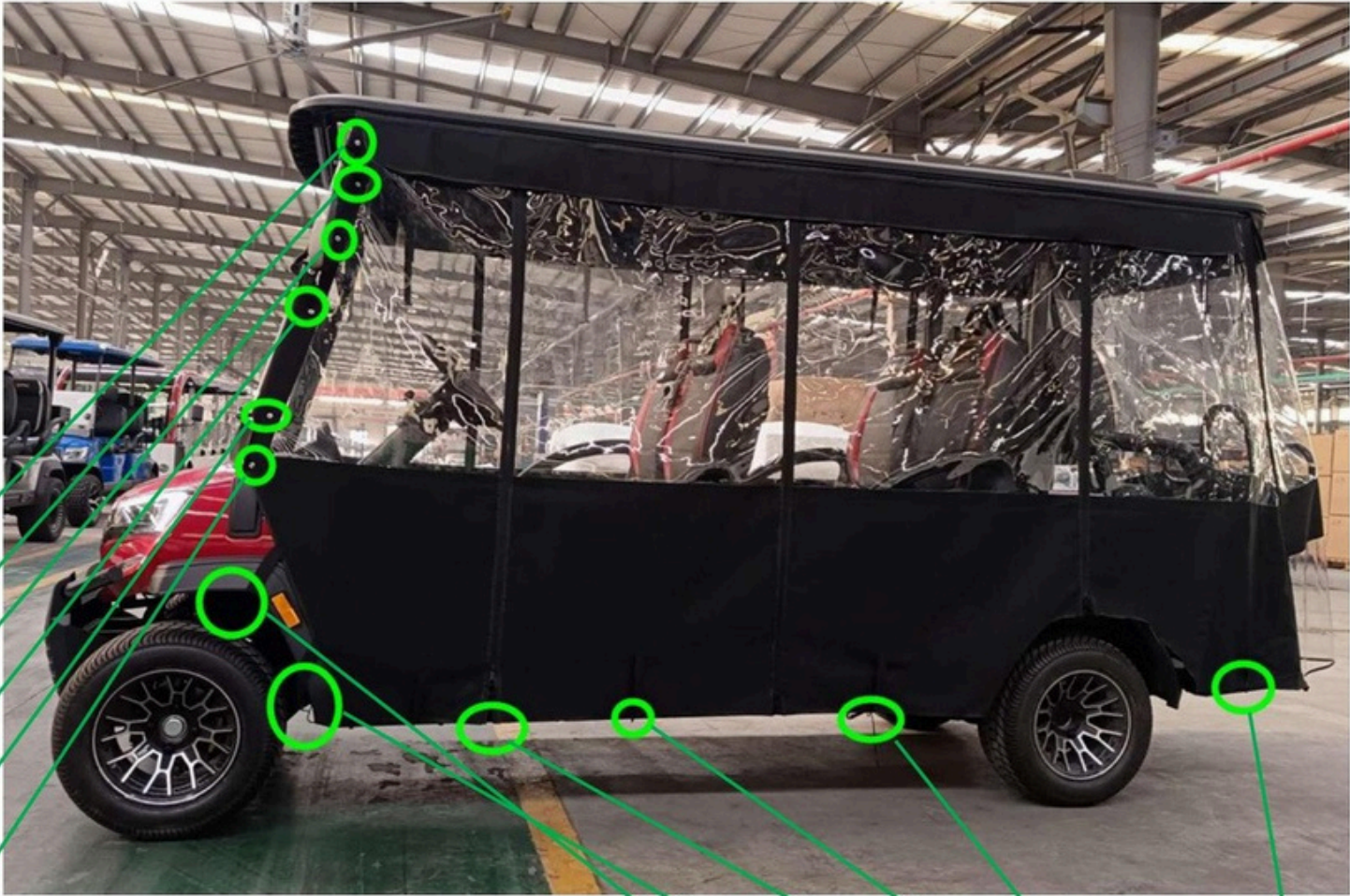
Step 2: Assemble the male and female plastic buckles: Insert the male buckle at the top of the front rain curtain into the female plastic buckles on the left and right sides of the rain curtain, referring to the green boxes and green arrows in Figures 2 and 3.



Rendering after assembly



9. Front rain curtain pre-installed



Fasten all the four snap fasteners on the rain curtain together.

Attach the metal clips to the bottom of the tram railing .