



# ICON<sup>®</sup>

ELECTRIC VEHICLES

## 10" Screen Install

Rev: 5/12/25

# **Install Instructions for the 2025 10 inch display screen on all 2023-2025 Icon's**

**Note: This first procedure is for replacing just the screen on a 2025 cart only no harness replacement is required. FOR 2023-2024 SEE BELOW**

1. lift up the cup holder base to access the wire



2. Remove the 4 Phillips head screws holding the screen to the screen base



3. Pull back the screen from the screen holder to access the connections



4. Disconnect the gang plug from the screen and disconnect the antenna plug, the USB port plug, and the back up camera plug. Reinstall the new screen in the reverse order on disassembly.



Refer to the Icon Display manual for on the dealer portal for further screen operation instruction

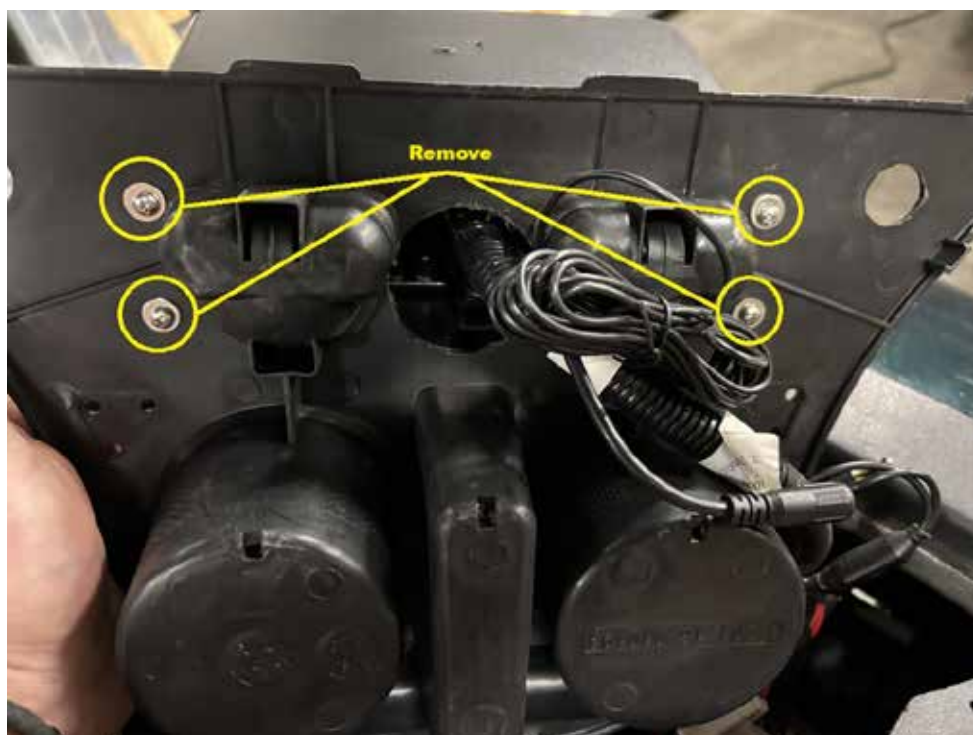


## 2024 screen kit install instructions

1. Remove the cup holder base



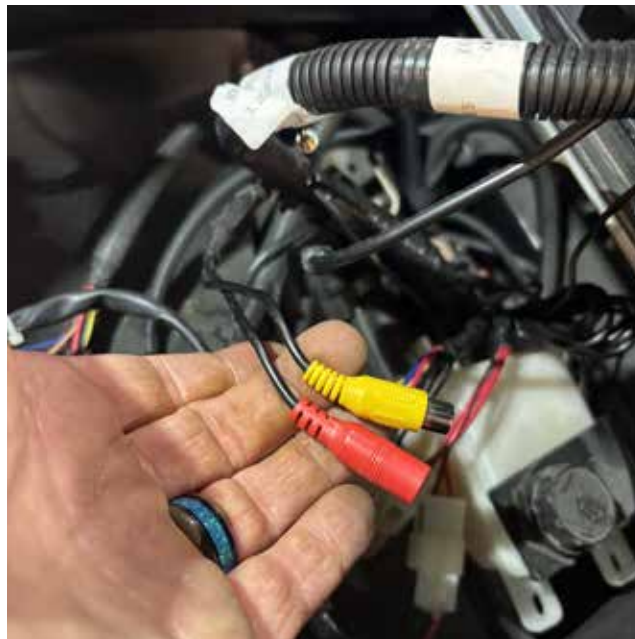
2. Remove the 4 screws holding the screen case to the cup holder base



3. Disconnect the square white connector from the main harness



4. Remove the Red/Yellow AV video harness going to the back of the cart and remove the standard old style camera as it will not be used with this updated kit



5. Remove the standard 2 port USB socket and disconnect the Black and Blue power leads and put to the side as these will be used to power the USB Mic socket

Old USB Socket



New USB Socket



6. If equipped disconnect the 3.5mm Aux audio jack and lead from the harness being removed





7. Remove the old screen assembly from the cart

2024 screen assembly



**NOTE:** The new screen kits have the 2023 conversion harness preinstalled so the 4 screws on the cover housing will need to be removed to access the main harness plug on the back of the new screen and the harness from the old screen will need to be used for the 2024 install.

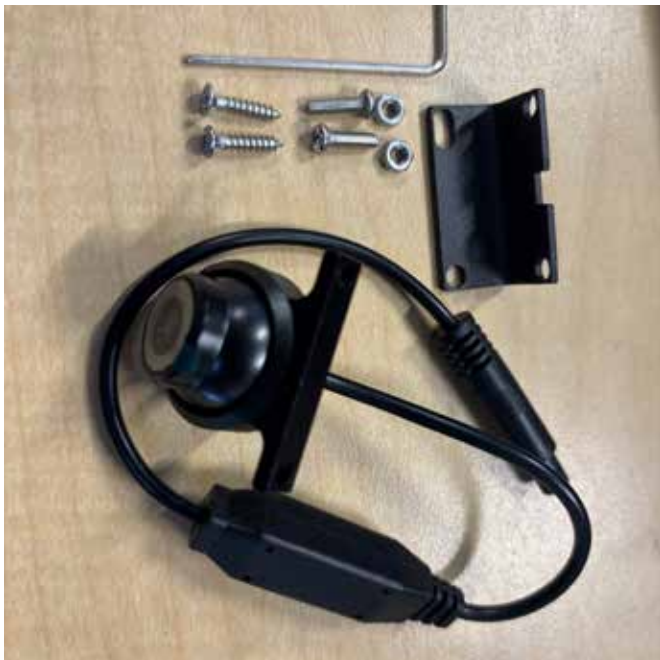
2025 Screen assembly with the 2023 conversion harness preinstalled



8. Once the harness has been swapped over and the screen housing has been reassembled run the harness through the cup holder base and reinstall the 4 baseplate screws that were previously removed in step 2



9. Assembly the new camera and mount to a suitable location





10. Now run the camera harness from the back of the cart to the front under the dash.  
NOTE: ensure the male end of the camera harness is connected into the camera before running it to the front of the unit to make sure the cable isn't installed on the cart backwards. When the camera harness is run to the front install into the plug coming from the screen labeled (CAM0009)

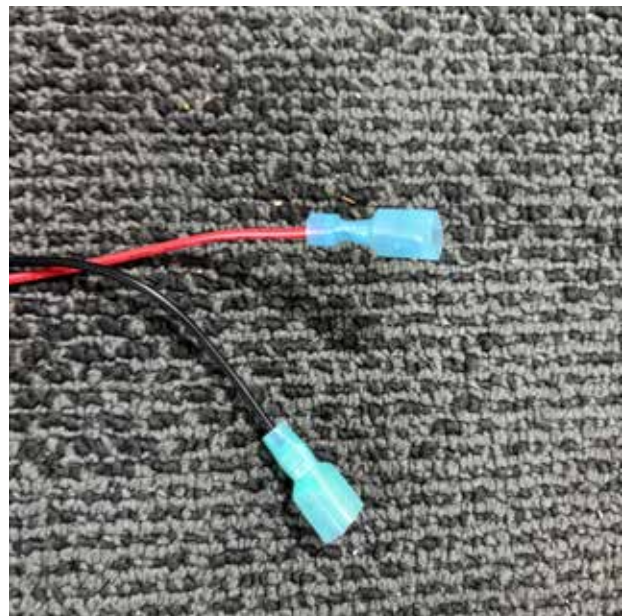


11. Next install the new USB/MIC Socket assembly into the dash where the old USB socket was removed and connect the Red plug to the connector labeled (USB&MIC) The two 12v connectors remove from the original USB socket will now be used to power the new USB socket

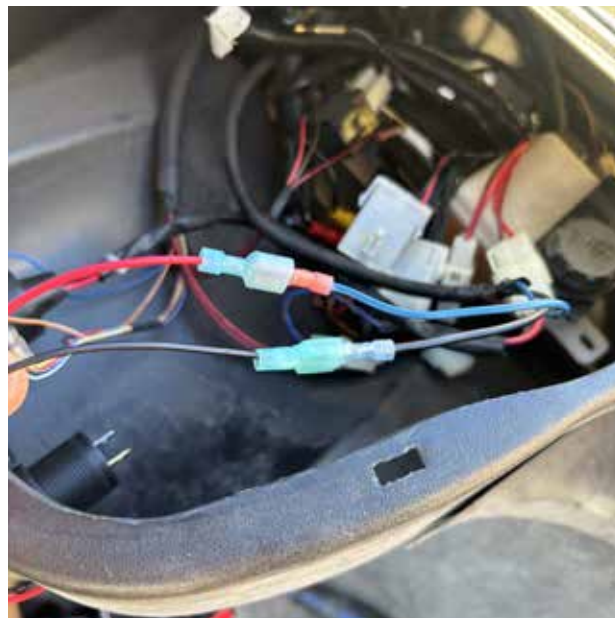


The Red/Black/Yellow plug on the new USB socket will need to be cut for the power supply

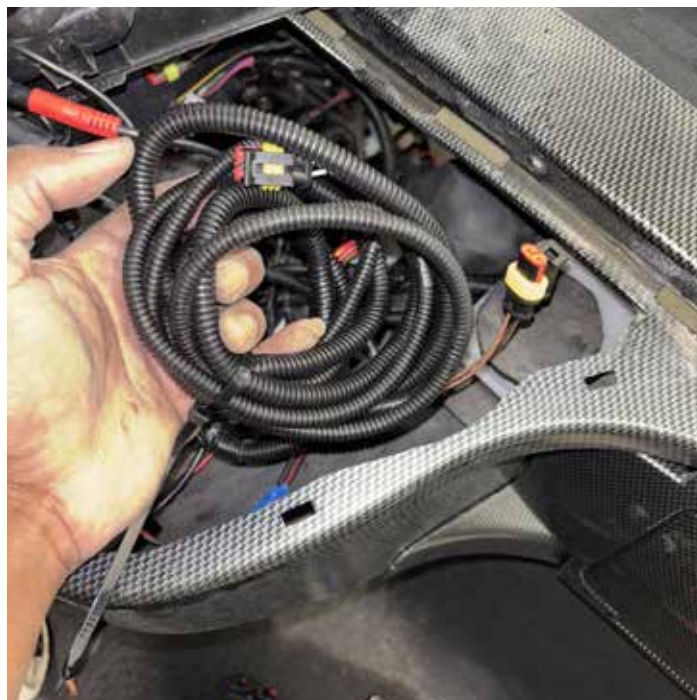
12. Cut the plug off and use blade male butt connectors to make the connection to the cart



NOTE: Red+ to Blue+ / Black- to Black-



The long 2 pin plugs are not used and should be rolled up and zip tied out of the way





## 2023 and 2023 conversion carts

On the 2023 cart all the white harness plugs will go in the same places they are removed, the USB/ Mic and reverse cable are installed as described previously. The long 2 pin plugs are also not used.



On all models, the screen support is installed using the double sided tape once the screen is fully installed and and the cup holder in secured with its clips.

