

# ICON<sup>®</sup> HD

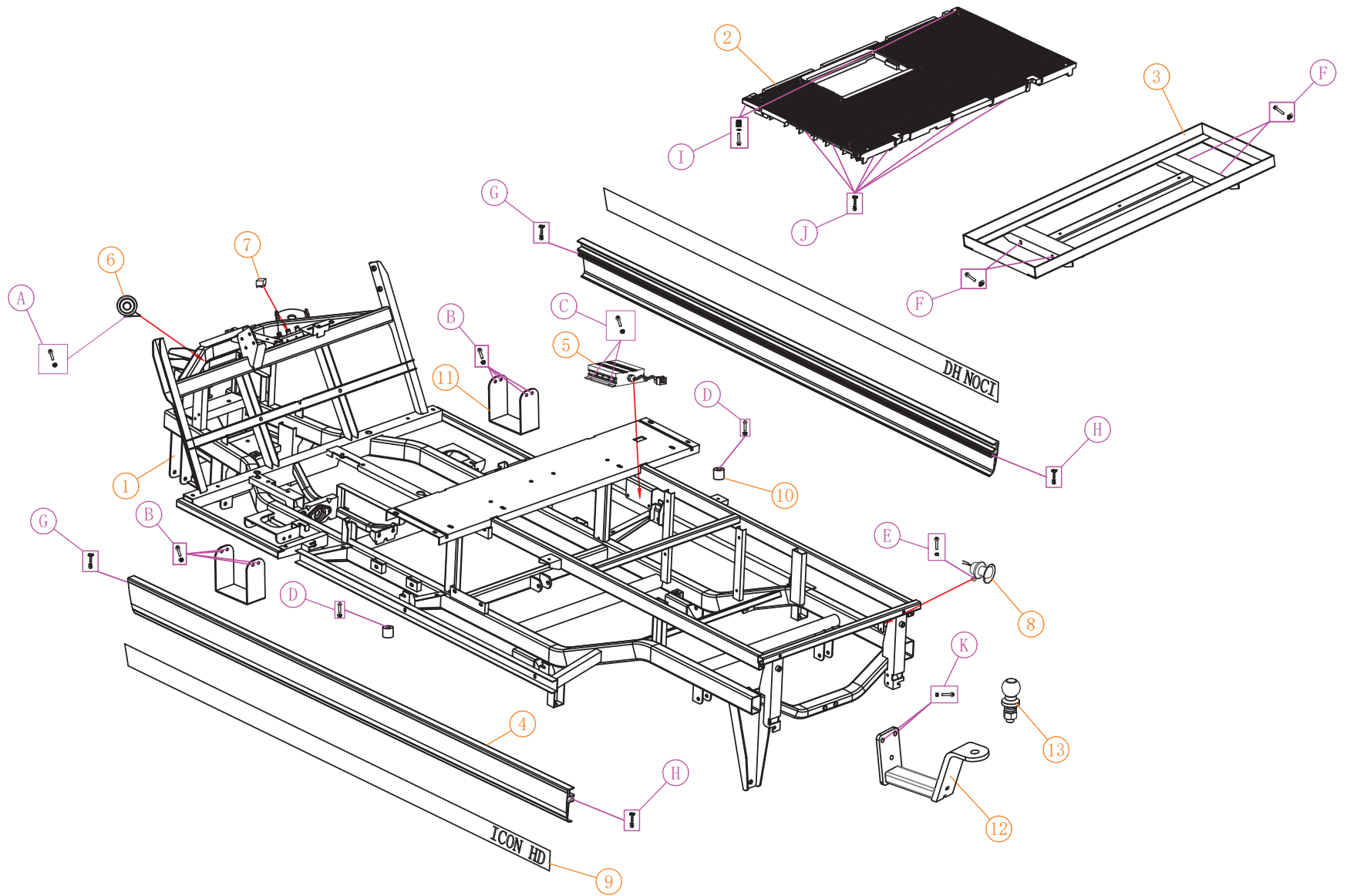
HEAVY DUTY EV



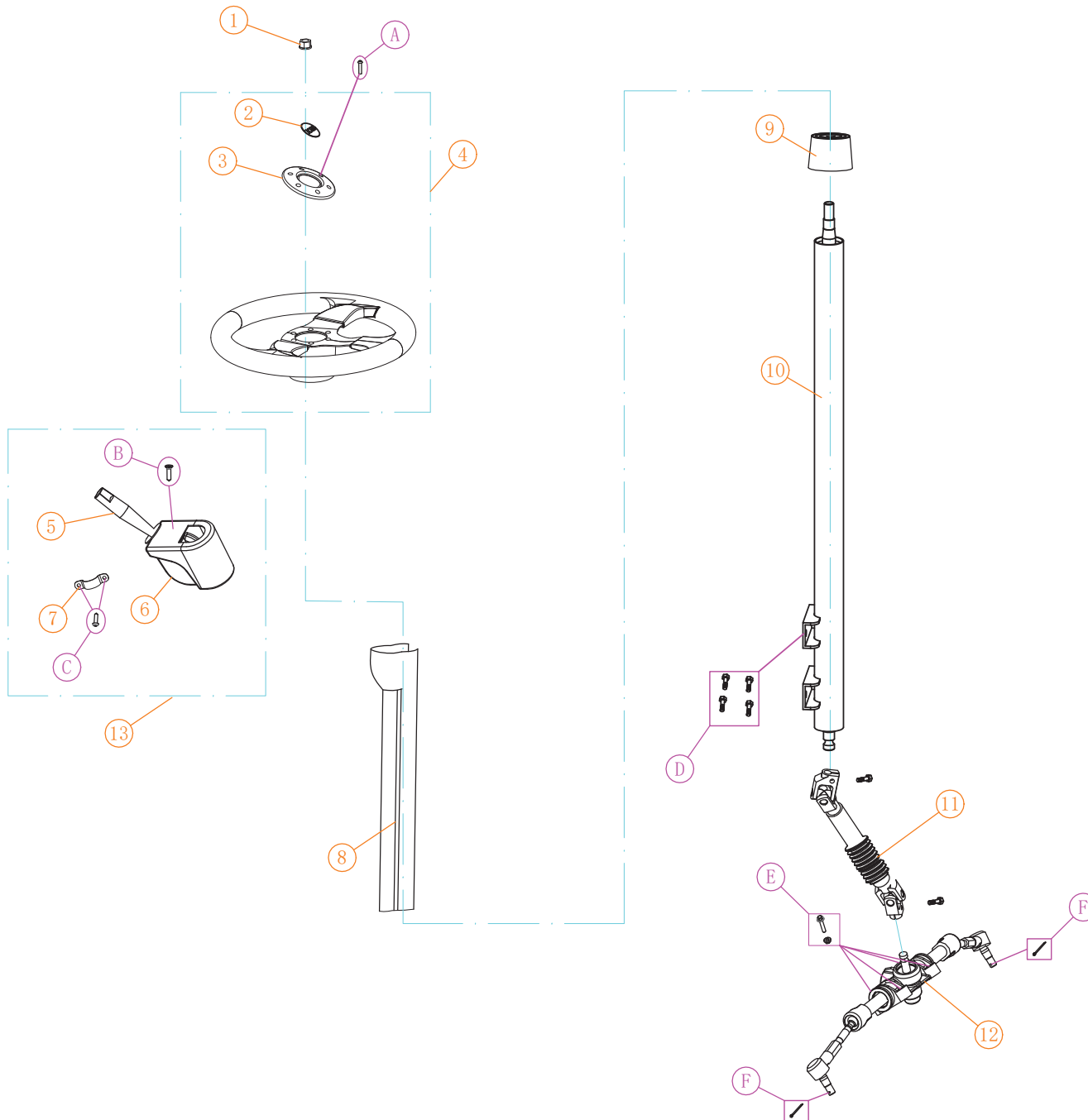
## ICON-HD PARTS MANUAL

REV. 4/18/2024





screw specifications					B617.H8HD/H8GHD					Chassis frame(1)				
NO:	Code	Name	QTY	Remark						NO:	Code	Name	QTY	Remark
A	3.205.04.010019 HW-204-IC	(6*45) Flange screw	1		K	3.205.04.010058 HW-250-IC	(10*75) Flange screw	2		1	2.03.105.100020 CHSS-214-HD	B617.H8HD chassis frame	1	B617.H8HD
	3.205.04.030002 HW-223-IC	(6mm) Flange nut	1			3.205.04.030004 HW-239-IC	(10mm) Flange nut	2			2.03.105.100021 CHSS-215-HD	B617.H8GHD chassis frame	1	B617.H8GHD
B	3.205.04.010005 HW-208-IC	(8*20) Flange screw	8								3.201.16.010220 BD-ECHD427	A617.H8HD front baseplate	1	
	3.205.04.030003 HW-205-IC	(8mm) Flange nut	8								2.03.104.100017 BTRY-ECHD101	827.H8 battery holder	1	Powder spray parts
C	3.205.04.010003 HW-219-IC	(6*16) Flange screw	2								2.01.105.000003 CHSS-216-HD	B617.H8HD Side guard	2	
	3.205.03.030010 HW-210-IC	(M6) Clip nut	2								3.202.15.000001 VLT-701-IC	DC convertor	1	48V/300W
D	3.205.01.010080 HW-ECHD312	Stainless steel round head Phillips screw	2	6*40							3.202.10.000007 ELE-701-IC	12V Fanfare horn	1	
	3.205.01.030007 HW-310-IC	(M6) Stainless steel nut	2								3.202.16.030046 ELE-707-IC	Electronic flasher	1	
E	3.205.04.010003 HW-219-IC	(6*16) Flange screw	1								3.202.10.000008 ELE-708-IC	S14 Reversing voice buzzer	1	
	3.01.003.100013 HW-223-IC	(6mm) Flange outer hexagon common nut	1								4.01.004.010040 ACS-200-HD	B617.H8HD Side Edge Protection Sticker/ICON	1	
F	3.205.04.010005 HW-208-IC	(8*20) Flange screw	4								3.201.11.000100 HW-ECHD315	H2 cargo box gasket	2	
	3.205.03.030016 HW-ECHD305	(M8) Clip nut	4								2.03.105.000035 HW-ECHD303	B617 Side step reinforcement folding plate	2	
G	3.205.03.010032 HW-ECHD304	(M6*50) All sides screw	4								2.03.105.000039 ST-233-HD	B617 Trailing installation seat	1	
	3.205.04.030002 HW-223-IC	(6mm) Flange nut	4								3.209.02.000121 HITCH-703-IC	Trailer ball head	1	
	3.205.01.020009 HW-222-IC	(1.5*6, 5*26) Flat gasket	4											
H	3.205.03.010003 HW-508-HD	(M6*30) All sides screw	4											
	3.205.04.030002 HW-223-IC	(6mm) Flange nut	4											
	3.205.01.020009 HW-222-IC	(1.5*6, 5*26) Flat gasket	4											
I	3.205.03.030020 HW-509-HD	Countersunk head with internal hexagonal thread nut	2											
	3.205.04.010003 HW-219-IC	(6*16) Flange screw	2											
	3.205.01.020009 HW-222-IC	(1.5*6, 5*26) Flat gasket	2											
J	3.205.03.010007 HW-ECHD302	(M6*16) All sides screw	5											
	3.205.04.030002 HW-223-IC	(6mm) Flange nut	5											
	3.205.01.020009 HW-222-IC	(1.5*6, 5*26) Flat gasket	5											

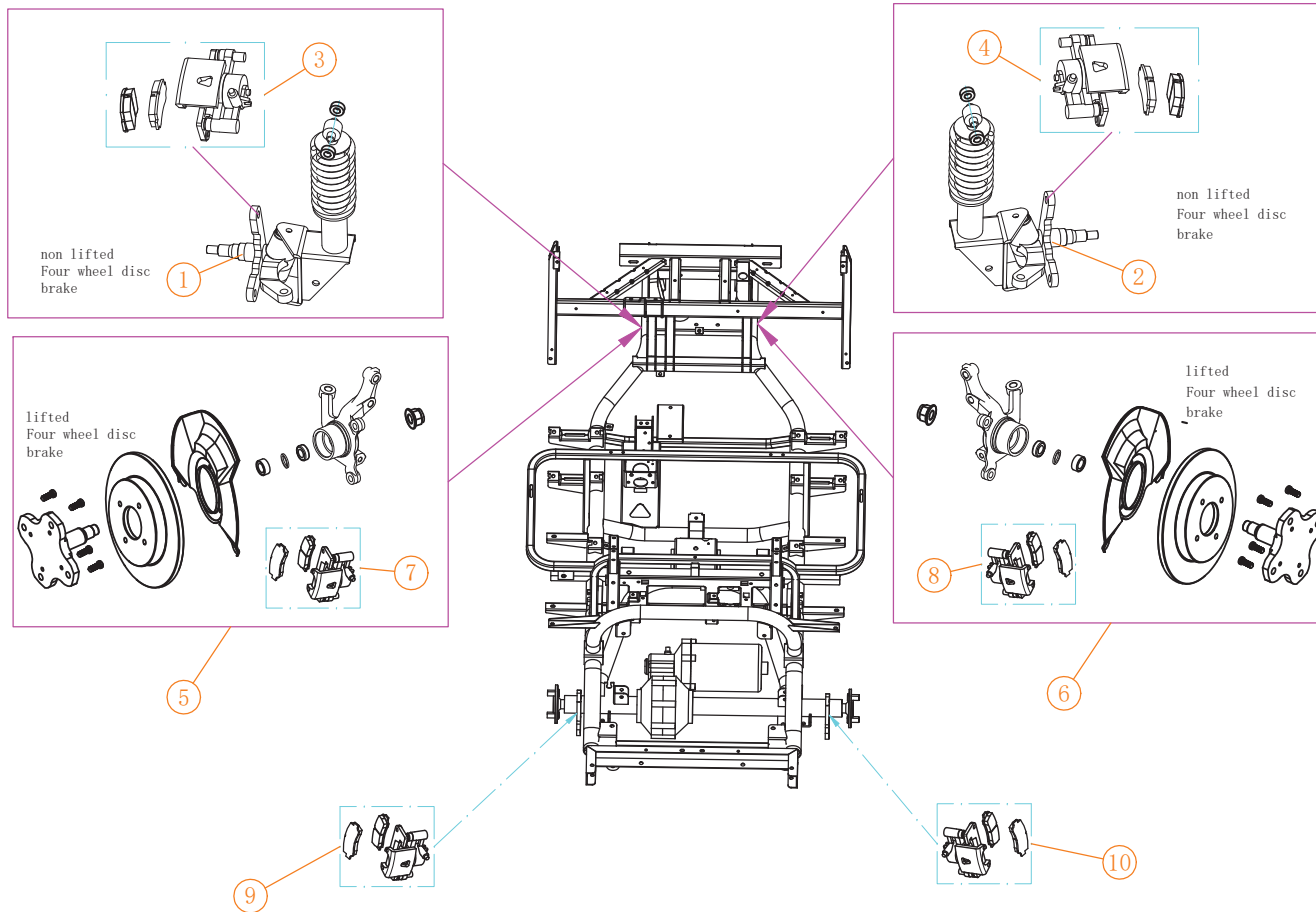


### Steering system(1)

NO:	Code	Name	QTY	Remark
1	3.01.003.100016 HW-231-IC	Flange Nut	1	M12
2	4.01.005.030024 ACS-715-IC	steering wheel logo	1	
3	3.206.10.000020 SR-318-IC	Trim ring/trim ring	1	
4	3.206.10.000005 SR-319-IC	steering wheel	1	
5	3.202.02.020062 LIGHT-701-IC	Single arm combination switch	1	
6	3.201.16.010062 BD-718-IC	Single arm combination switch holder	1	
7	3.209.02.000003 ELE-702-IC	Half side code	2	
8	3.201.16.010019 SR-ECHD807	A627 Steering switch wire cover	1	
9	3.206.10.000017 SR-305-IC	S8, FA steering hub adapter	1	With racing steering wheel
10	3.206.17.000027 SR-ECHD804	B617.2 Steering column	1	B617.2/2+2
11	3.206.02.000022 SR-327-IC	A627 universal joint fork assembly	1	Non-lifted version
	3.206.02.000023 SR-328-IC	A627 Lifted vehicle universal joint fork assembly-B	1	Lifted version
12	3.206.01.000017 SR-302-IC	Type A car steering gear (stroke 136mm, equipped with disc brake horn)	1	Non-lifted version
	3.206.01.000021 SR-301-IC	A627 Lifted car steering machine-B	1	Lifted version
13	2.08.001.000085 SR-330-IC	Single arm combination switch assy	1	
A	3.205.01.010135 HW-232-IC	Hexagon socket flat round head screw	6	5*16
B	3.205.01.010161 HW-233-IC	Stainless Steel Flat Head Phillips Screws	4	4*16
C	3.205.01.010038 HW-234-IC	Stainless steel round head Phillips screw	4	5*25
D	3.205.04.010005 HW-208-IC	Flange Screw	4	8*20
E	3.205.04.010015 HW-265-IC	(10*35) Flange screw	4	
	3.205.04.030004 HW-239-IC	(10mm) Flange nut	4	
F	3.205.05.040003 BRAK-ECHD102	Cotter pin	1	2.5*30







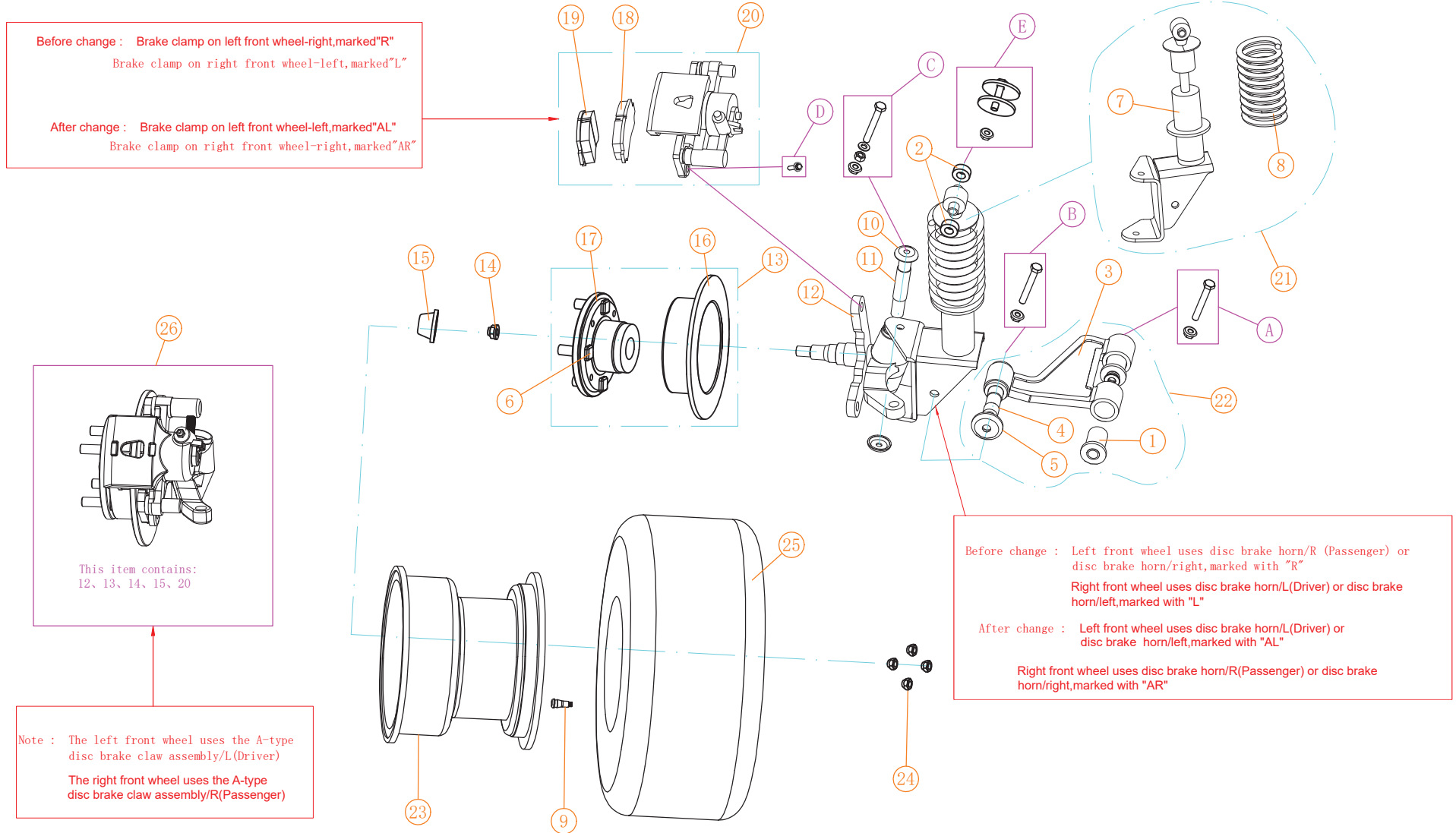
### Brake cylinder cover

NO:	Code	Name	QTY	Remark
1	3.01.005.010005 SUS-712-IC	Disc brake knuckle/L	1	
	3.01.004.050121 SUS-713-IC	Disc brake knuckle/L	1	Use after January 21
2	3.01.005.010004 SUS-714-IC	Disc brake knuckle/R	1	
	3.01.004.050120 SUS-711-IC	Disc brake knuckle/R	1	Use after January 21
3	3.01.006.200091 BRAK-612-IC	Front brake cylinder/L	1	
4	3.01.006.200092 BRAK-613-IC	Front brake cylinder/R	1	
5	3.01.005.010012 BRAK-604-IC	A617 Knuckle assy for lifted cart/L	1	
6	3.01.005.010013 BRAK-603-IC	A617 Knuckle assy for lifted cart/R	1	
7	3.01.006.200082 BRAK-614-IC	Front brake callipers/L	1	
8	3.01.006.200083 BRAK-615-IC	Front brake callipers/R	1	
9	3.01.004.110106 BRAK-610-IC	A617 rear brake pincers for lifted cart/L	1	
10	3.01.004.110105 BRAK-606-IC	A627 rear brake pincers for lifted cart/R	1	



This view shows the left front wheel

# Front axle parts diagram (1)



screw specifications				
NO:	Code	Name	QTY	Remark
A	3.01.003.100016 PY-EG-ED	GM12-75 Screw	4	M12*75
	3.01.003.100016 PY-EG-ED	Flange Nut	4	M12
B	3.01.006.020044 HW-246-IC	GM12-85 Screw	2	M12*85
	3.01.003.100016 HW-231-IC	Flange Nut	2	M12
C	3.01.006.020046 HW-247-IC	GM10*140 Screw	2	M10*140
	3.01.003.080005 HW-379-IC	(2.0*10*20) Flat gasket	2	
	3.01.003.100011 HW-380-IC	Flange outer hexagon common nut	2	M10
	3.01.003.100015 HW-239-IC	Flange Nut	2	M10
D	3.01.003.060008 HW-248-IC	Flange Screw	4	M12*20
E	3.01.003.100084 HW-249-IC	Adjusting screw	2	M10*70
	3.01.003.100015 HW-239-IC	Flange Nut	2	M10

Front axle parts diagram (1)				
NO:	Code	Name	QTY	Remark
1	3.206.18.000013 SUS-715-IC	suspension bushing	4	two for each side
2	3.201.11.000061 SUS-716-IC	S4P front shock absorber limit rubber sleeve	4	
3	3.206.16.000004 SUS-717-IC	Arm	2	one for each side
4	3.206.16.000003 SUS-718-IC	Arm shaft	2	one for each side
5	3.206.16.000001 SUS-719-IC	Arm seal	4	two for each side
6	3.205.05.010024 HW-245-IC	Disc wheel screw	8	
7	3.206.03.000001A SUS-720-IC	-( ) 04 @ & 100 * [ 10 10 (0 10 10 )	1	
	3.206.03.000002A SUS-721-IC	-( ) 04 @ & 100 * [ 10 10 (R (Passenger)	1	
8	3.206.13.000027 SUS-723-IC	A11-Front spring	2	
9	3.201.01.000007 WT-106-IC	Valve	2	one for each side
10	3.206.18.000027 SUS-724-IC	Knuckle shaft seal/big	4	two for each side
11	3.206.09.000003 HW-241-IC	Main washer	2	one for each side
12	3.206.09.000011 SUS-713-IC	Disc brake knuckle/R (Passenger)	1	Colored zinc plating, for wheel hub bearings
	3.206.09.000010 SUS-711-IC	Disc brake knuckle/L (Driver)	1	
13	3.206.05.000032 BR-701-IC	A Disc Wheel Bearing assy	2	
14	3.205.03.030002 HW-243-IC	knuckle nut	2	
15	3.206.18.000034 SUS-726-IC	Metal Wheel cover	2	
16	3.206.14.000138 BRAK-617-IC	A Disc brake	2	
17	3.206.14.000139 BR-702-IC	A Disc brake bearing base	2	
18	3.206.14.000022 BRAK-661-IC	Front brake caliper brake pad/inner	2	one for each side
19	3.206.14.000021 BRAK-662-IC	Front brake caliper brake pad/outer	2	one for each side
20	3.206.14.000125 BRAK-613-IC	Front brake caliper-L (Driver)	1	
	3.206.14.000124 BRAK-612-IC	Front brake caliper-R (Passenger)	1	
21	2.08.001.000007 SUS-729-IC	A11 front shock absorber assy/L (Driver)	1	
	2.08.001.000006 SUS-730-IC	A11 front shock absorber assy/R (Passenger)	1	
22	2.08.001.000028 SUS-710-IC	A-type car rocker arm assembly	2	
23	3.206.06.000044 SUS-513-HD	10 inch wheel rim	2	
24	3.205.05.030019 SUS-ECHD305	C wheel nut	8	four for each side
25	3.201.01.000023 WT-108-IC	brake wheel	2	
26	2.08.001.000050 BRAK-609-IC	A Disc brake knuckle assy/L (Driver)	1	
	2.08.001.000051 BRAK-608-IC	A Disc brake knuckle assy/R (passenger)	1	

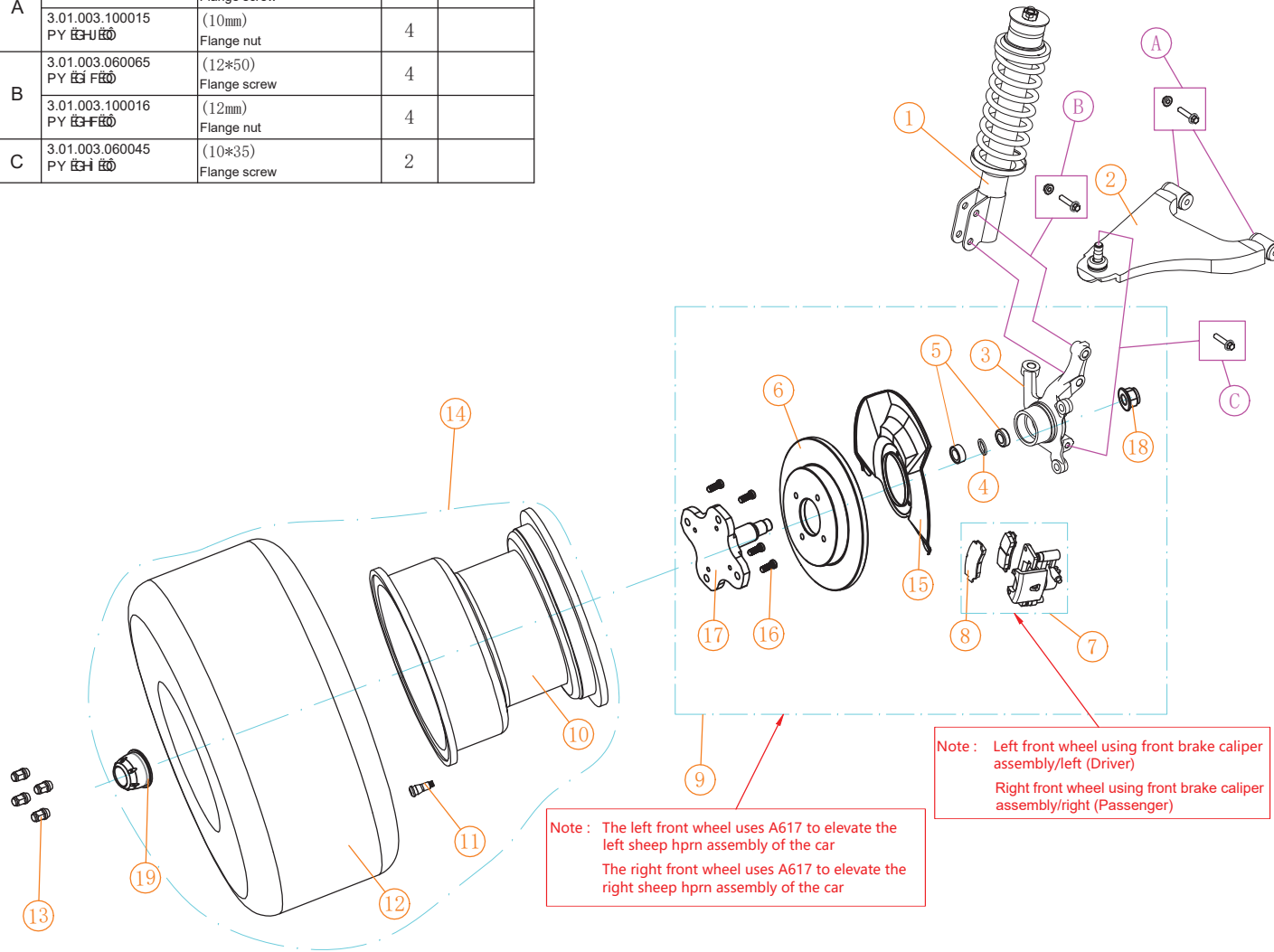


screw specifications

NO:	Code	Name	QTY	Remark
A	3.01.003.060069 PY 63-600	(10*75) Flange screw	4	
	3.01.003.100015 PY 63-100	(10mm) Flange nut	4	
B	3.01.003.060065 PY 63-F00	(12*50) Flange screw	4	
	3.01.003.100016 PY 63-F00	(12mm) Flange nut	4	
C	3.01.003.060045 PY 63-H 000	(10*35) Flange screw	2	

Lifted four-wheel disc brake

This view shows the right front wheel



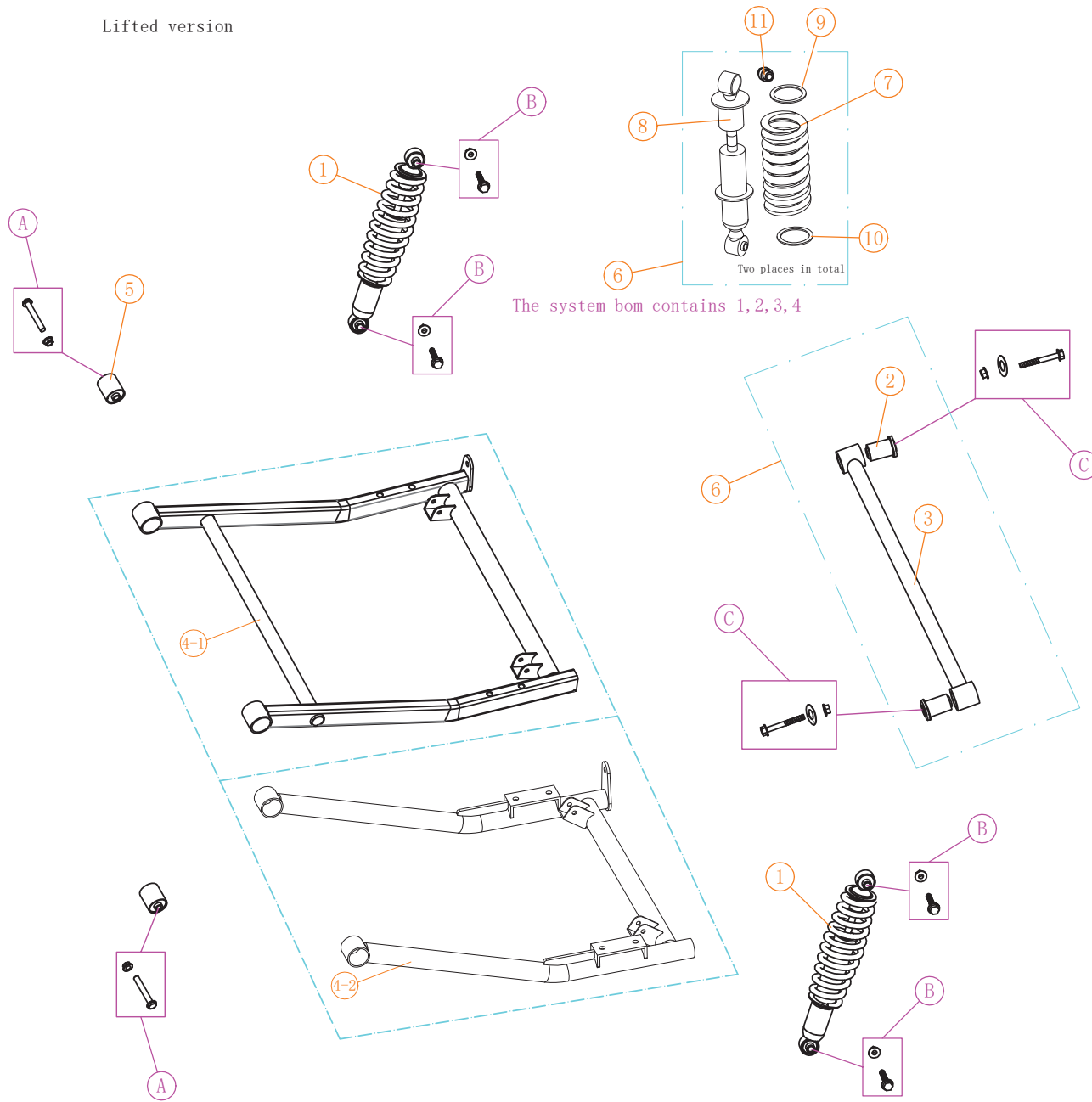
Front suspension(2)

NO:	Code	Name	QTY	Remark
1	3.206.03.000021 SUS-732-IC	A617.4G Front shock absorber ass L (Driver)	1	
	3.206.03.000022 UWU6-600	A617.4G Front shock absorber ass R (Passenger)	1	
2	3.206.16.000011 UWU6-600	PD Lower control arm/L (Driver)	1	
	3.206.16.000010 UWU6-600	PD Lower control arm/R (Passenger)	1	
3	3.206.09.000018 UWU6-H00	S2.DB Knuckle/L (Driver)	1	
	3.206.09.000019 UWU6-H 00	S2.DB Knuckle/R (Passenger)	1	
4	3.206.05.000035 OU6-600	Bearing base seal	2	one for each side
5	3.206.05.000005 OU6-600	Bearing 6205	4	two for each side
6	3.206.14.000113 OU6S6-FJ00	Front brake disc	2	one for each side
7	3.206.14.000115 OU6S6-FI 00	Front brake callipers/R	1	
	3.206.14.000114 OU6S6-FI 00	Front brake callipers/L	1	
8	3.206.14.000047 OU6S6-0600	V2 Front brake shoe	4	two for each side
9	3.206.09.000026 OU6S6-600	A617 Knuckle assy for lifted cart/R (Passenger)	1	
	3.206.09.000025 OU6S6-600	A617 Knuckle assy for lifted cart/L (Driver)	1	
10	3.206.06.000010 Y V6-F000	LD-A691275 Wheel rim	2	one for each side Includes size 19 wheel rim caps
11	3.201.01.000007 Y V6-600	Vacuum nozzle	2	one for each side
12	3.201.01.000022 Y V6-FF00	brake wheel	2	23 inches
13	3.205.05.030015 Y V6-600	C type hub nut (with cap)	8	four for each side
14	2.08.001.000004 Y V6-F000	23 inch brake wheel assy	1	
15	3.206.14.000159 UWU6-H 00	Splash shield/L (Driver)	1	
	3.206.14.000160 UWU6-H 00	Splash shield/R (Passenger)	1	
16	3.205.05.010025 PY 63-H 000	Lifted car disc brake hub screws	8	
17	3.206.05.000050 OU6-600	Bearing base	2	
18	3.205.03.030002 PY 63-H 000	Knuckle hub nut	2	
19	3.206.06.000033 Y V6-600	Aluminum steel ring cover	2	





Lifted version



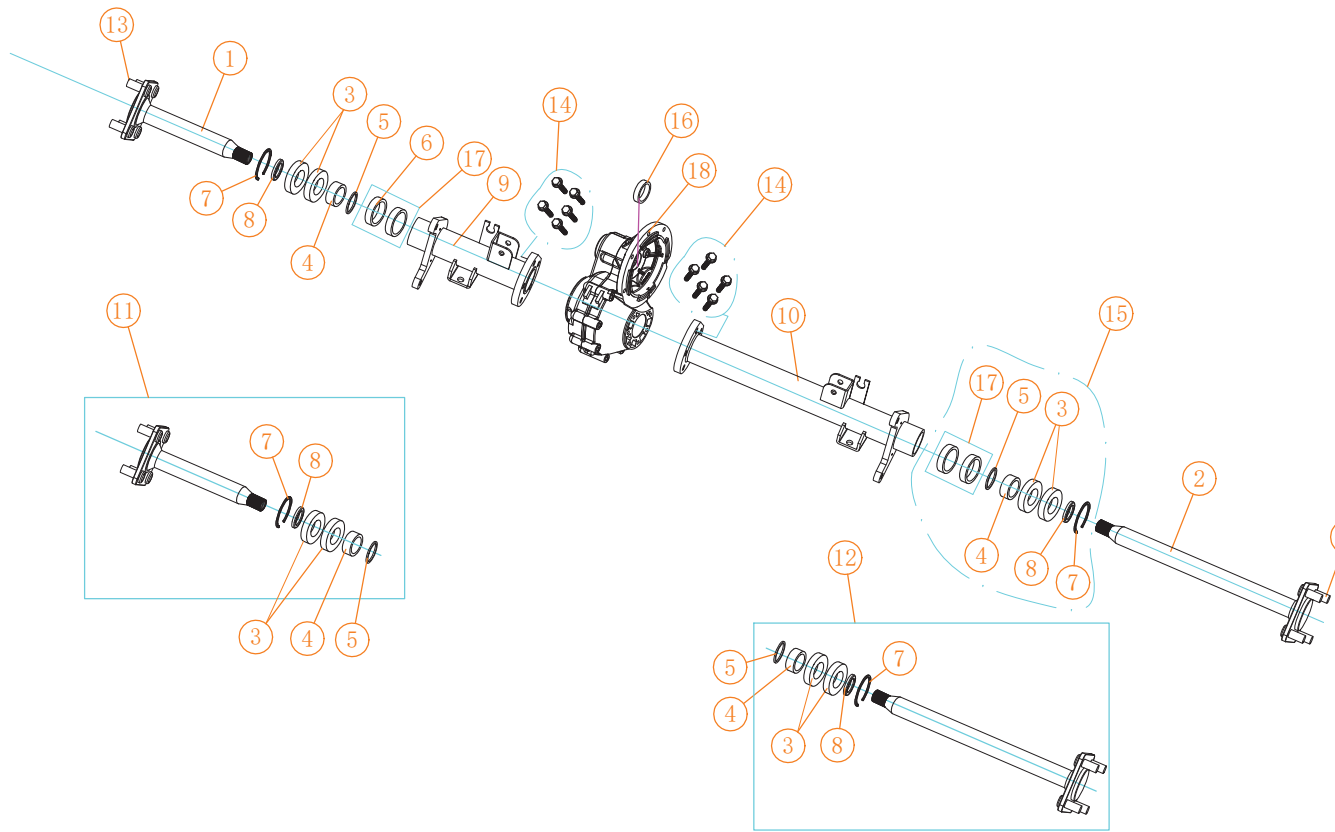
Rear suspension parts(2)

NO:	Code	Name	QTY	Remark
1	2.08.001.000053 SUS-ECHD300	H8 rear shock absorber assy	2	
2	3.206.18.000013 SUS-715-IC	Suspension bush	2	Ø13*50mm
3	2.03.103.100066 SUS-746-IC	A627 rear balancing pole	1	
4-1	2.03.104.100102 SUS-ECHD302	827 Transaxle bend pipe assy-B	1	September 2023 after changes
4-2	2.03.104.100141 SUS-ECHD303	827 Transaxle bend pipe assy-C	1	September 2023 after changes
5	3.206.16.000020 SUS-514-HD	S14 Rear drag arm rubber sleeve(S)	2	
6	2.08.001.000052 SUS-743-IC	A627 rear balancing pole assy	1	
7	3.206.13.000017 SUS-ECHD301	H8 Rear spring	2	
8	3.206.03.000003 SUS-739-IC	Rear shock absorber	2	
9	3.201.16.010093 SUS-740-IC	Rear shock absorb rubber	2	Inner diameter 44mm Outer diameter 55mm
10	3.201.16.010094 SUS-741-IC	Rear shock absorb low rubber rim	2	Inner diameter 40mm Outer diameter 55mm
11	3.206.03.000038 SUS-742-IC	Rear shock absorb bush	2	
A	3.01.003.060041 HW-ECHD313	Screw	2	12*1.25*90
	3.01.003.100016 HW-231-IC	Flange self-locking nut	2	M12
B	3.01.003.060060 HW-255-IC	(10*50) Flange screw	4	
	3.01.003.100015 HW-239-IC	(10mm) Flange nut	4	
C	3.01.003.080036 SUS-747-IC	(3.0*12*40) Gasket	2	
	3.01.003.060108 HW-ECHD314	(12*75) Flange Screw	2	
	3.01.003.100016 HW-231-IC	(M12) Flange Nut	2	







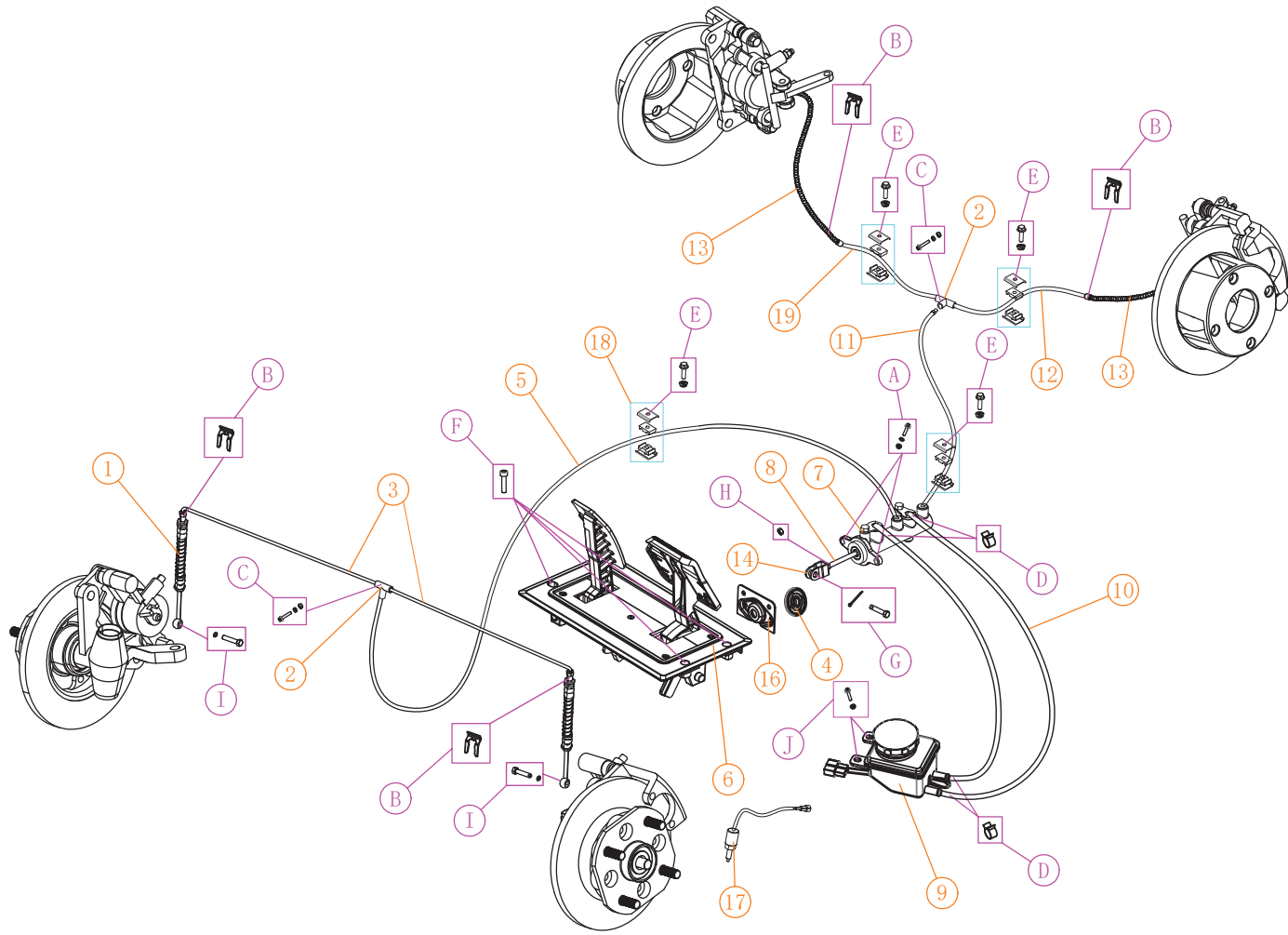


Transaxle system (2)

NO:	Code	Name	QTY	Remark
1	3.206.04.000143 AXEL-719-IC	Axle shaft /short	1	Non-lifted car rear axle LY130A627DS-5004
	3.206.04.000145 AXEL-720-IC	Axle shaft /short	1	Lifted rear axle LY130JGDS-5004
2	3.206.04.000144 AXEL-721-IC	Axle shaft /long	1	Non-lifted car rear axle LY130A627DS-5011
	3.206.04.000146 AXEL-722-IC	Axle shaft /long	1	Lifted rear axle LY130JGDS-5011
3	3.206.05.000008 BR-710-IC	Bearing	4	6205-2RS
4	3.205.01.040005 AXEL-723-IC	Transaxle oil seal base	2	Ø25*Ø34*13 LY130-5006
5	3.201.16.010157 AXEL-724-IC	Retaining ring	2	LY130-5007
6	3.206.04.000116 AXEL-725-IC	Transaxle oil seal	2	LY130-5008
7	3.206.05.000040 BR-711-IC	Bearing Retaining ring	2	Ø52 retaining ring for hole LY130-5009
8	3.206.18.000043 AXEL-726-IC	Washer	2	Ø25.5*Ø34*4 LY130-5012
9	3.206.04.000151 AXEL-727-IC	Short pipe	1	Non-lifted car rear axle LY130A627DS-5001
	3.206.04.000152 AXEL-728-IC	Short pipe	1	Lifted rear axle LY130JGDS-5001
10	3.206.04.000153 AXEL-729-IC	Long pipe	1	Non-lifted car rear axle LY130A627DS-5002 4KW
	3.206.04.000155 HW-386-IC	Long pipe	1	Non-lifted car rear axle LY125A627DS-5002 5KW
	3.206.04.000154 AXEL-730-IC	Long pipe	1	Lifted rear axle LY130JGDS-5002 4KW
	3.206.04.000156 HW-387-IC	Long pipe	1	Lifted rear axle LY125JGDS-5002 5KW
11	3.206.04.000098 AXEL-731-IC	A617 Axle shaft Assy/short	1	Non-lifted car rear axle LY130A627DS-5000
	3.206.04.000134 AXEL-732-IC	A617 Axle shaft Assy/L (Driver)	1	Lifted rear axle LY130JGDS-5000
12	3.206.04.000097 AXEL-733-IC	A617 Axle shaft Assy/long	1	Non-lifted car rear axle LY130A627DS-7000
	3.206.04.000135 AXEL-734-IC	A617 Axle shaft Assy/R	1	Lifted rear axle LY130JGDS-7000
13	3.205.02.010006 HW-510-HD	A627 Wheel screw	8	1/2*45
14	3.205.04.010015 HW-265-IC	Screw	10	M10*35 Non-lifted car rear axle
			12	M10*35 Lifted rear axle
15	3.206.05.000051 BR-712-IC	A617 transaxle bearing Assy	2	
16	3.206.18.000048 AXEL-752-IC	Input shaft oil seal	1	

18	3.206.04.000124 AXEL-762-IC	A617 Rear axle-1 gearbox	1		18	3.201.11.000141 HW-382-IC	metal ring + oil seal	2	
	3.206.04.000170 AXEL-745-IC	A617 Rear axle-2 gearbox	1			3.206.04.000163 AXEL-738-IC	A617 Rear axle gearbox	1	16:1, Equipped with 5KW motor
	3.206.04.000171 AXEL-746-IC	A617 Rear axle-4 gearbox	1			3.206.04.000125 AXEL-503-HD	A617 Rear axle-2 gearbox	1	12.31:1, Equipped with 4KW motor
	3.206.04.000172 AXEL-747-IC	A617 Rear axle-5 gearbox	1			3.206.04.000164 AXEL-739-IC	A617 Rear axle-3 gearbox	1	10.5:1, Equipped with 4KW motor
	3.206.04.000174 AXEL-748-IC	A617 Rear axle-8 gearbox	1			3.206.04.000165 AXEL-740-IC	A617 Rear axle-4 gearbox	1	16:1, Equipped with 4KW motor
	3.206.04.000175 AXEL-749-IC	A617 Rear axle-9 gearbox	1			3.206.04.000166 AXEL-741-IC	A617 Rear axle-5 gearbox	1	12.31:1, Equipped with 5KW motor
	3.206.04.000176 AXEL-750-IC	A617 Rear axle-10 gearbox	1			3.206.04.000167 AXEL-742-IC	A617 Rear axle-6 gearbox	1	10.5:1, Equipped with 4KW motor
	3.206.04.000177 AXEL-751-IC	A617 Rear axle-12 gearbox	1			3.206.04.000168 AXEL-743-IC	A617 Rear axle-7 gearbox	1	14:1, Equipped with 5KW motor
						3.206.04.000169 AXEL-744-IC	A617 Rear axle-8 gearbox	1	14:1, Equipped with 5KW motor

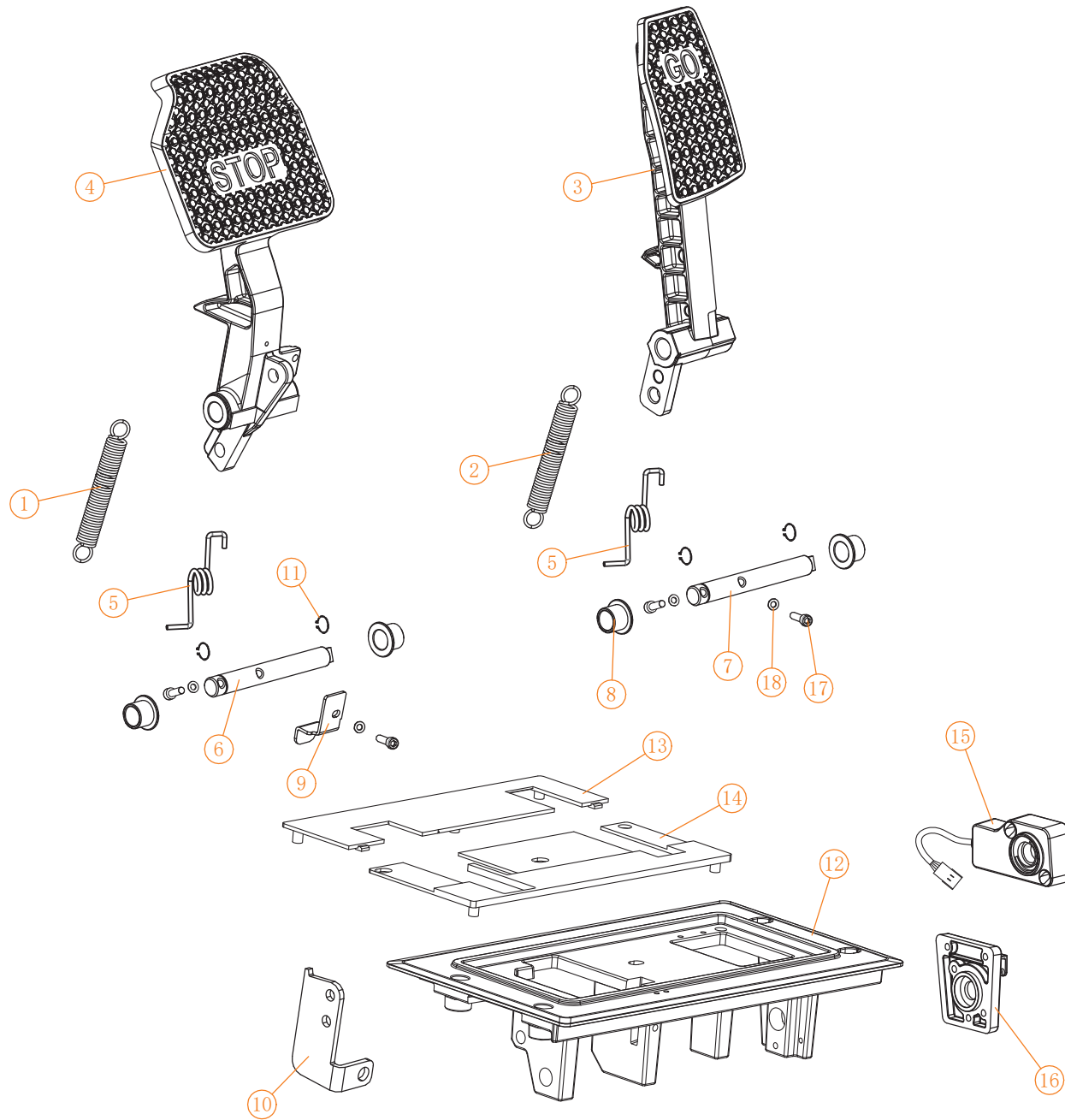
# Brake system parts diagram





screw specifications				
NO:	Code	Name	QTY	Remark
A	3.01.003.060055 BRAK-901-HD	(8*30) Flange screw	2	
	3.01.003.100014 HW-205-IC	(M8) Flange nut	2	
	3.01.003.080004 HW-207-IC	(1.2*8*20) Flat gasket	2	
B	3.01.004.030038 HW-270-IC	Disc brake tubing card	2	
C	3.01.003.060013 HW-377-IC	(6*30) Flange screw	2	
	3.01.003.100013 HW-223-IC	(M6) Flange nut	2	
	3.01.003.080003 HW-260-IC	(1.5*6*18) Flat gasket	2	
D	3.01.006.000442 HW-269-IC	Spring clamp	4	Ø16
E	3.01.003.060010 HW-272-IC	(6*25) Flange screw	4	A827. 2/2+2 2G/2+2G
	3.01.003.100009 HW-220-IC	(M6) Flange nut	4	
	3.01.003.060010 HW-272-IC	(6*25) Flange screw	6	A827. 4/4+2 4G/4+2G
	3.01.003.100009 HW-220-IC	(M6) Flange nut	6	
	3.01.003.060010 HW-272-IC	(6*25) Flange screw	8	A827. 6/6+2
	3.01.003.100009 HW-220-IC	(M6) Flange nut	8	
F	3.01.003.070068 BRAK-902-HD	(8*25) Hexagon socket round head bolt	4	
G	3.209.02.000160 BRAK-ECHD103	Front pin of brake cable	1	10*25
	3.205.05.040003 BRAK-ECHD102	Cotter pin	1	3*50
H	3.01.003.100022 BRAK-903-HD	(M8) Flange nut	1	
I	3.01.003.070041 HW-266-IC	Hollow screw	2	Ø10
	3.01.004.030030 HW-271-IC	S14 Plastic oil pipe gasket	4	
J	3.01.003.060004 HW-219-IC	(6*16) Flange screw	2	
	3.01.003.100013 HW-223-IC	(6mm) Flange nut	2	

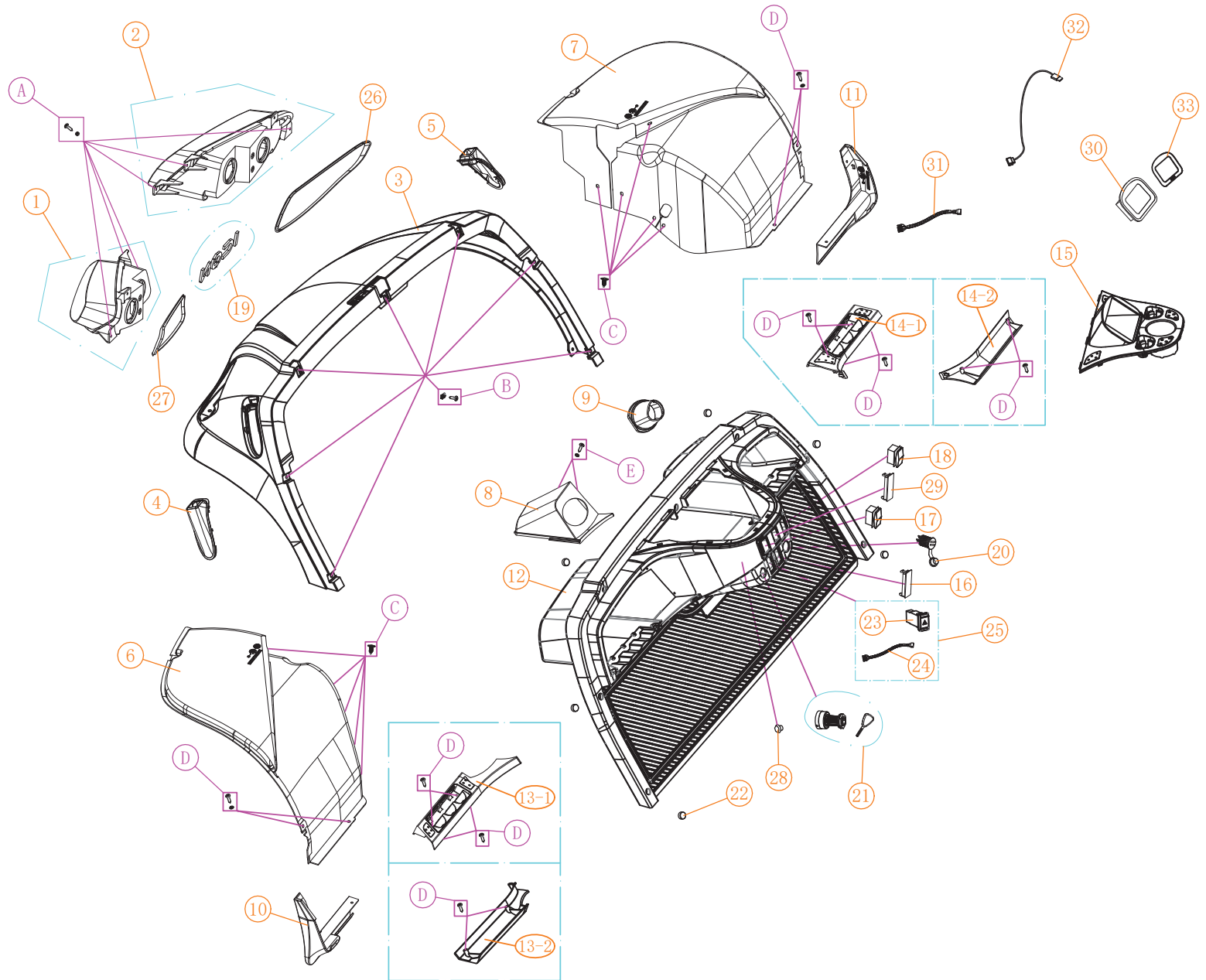
Brake system parts diagram				
NO:	Code	Name	QTY	Remark
1	3.206.07.000033 BRAK-639-IC	A Rear plastic oil pipe	2	500mm
2	3.206.14.000026 BRAK-637-IC	Disc brake tee	2	
3	3.206.07.000013 BRAK-668-IC	Brake steel oil pipe 250	2	B617.H8GHD
4	3.201.11.000124 BRAK-643-IC	Brake master cylinder dust proof rubber pad	1	
5	3.206.07.000004 BRAK-667-IC	Brake steel oil pipe 750	1	
6	3.206.14.000102 BRAK-911-HD	827 Hydraulic brake pedal assy	1	
7	3.206.14.000006 BRAK-601-IC	Brake master cylinder	1	7/8
8	3.205.03.040007 BRAK-908-HD	S14 Brake master cylinder putter	1	
9	3.206.14.000134 BRAK-912-HD	Brake oil tank-B	1	
10	3.206.07.000046 BRAK-627-IC	Oil tank pipe	2m	
11	3.206.07.000021 BRAK-670-IC	Brake steel oil pipe 1210	1	
12	3.206.07.000004 BRAK-667-IC	Brake steel oil pipe 750	1	B617.H8HD
	3.206.07.000002 BRAK-926-HD	Brake steel oil pipe 900	1	B617.H8GHD
13	3.206.07.000026 BRAK-636-IC	Rear plastic oil pipe	2	600mm
14	3.206.14.000037 BRAK-657-IC	Brake pedal master cylinder connecting fork	1	
16	2.03.101.100116 BRAK-646-IC	Brake master cylinder fixed plate	1	
17	3.202.02.020065 BRAK-ECHD100	A827 waterproof Brake light switch	1	
18	3.201.16.020170 BRAK-645-IC	Locking buckle	4	B617.2/2+2
19	3.206.07.000005 BRAK-925-HD	Brake steel oil pipe 600	1	



Brake system parts diagram

NO:	Code	Name	QTY	Remark
1	3.206.14.000146 BRAK-914-HD	A827 Brake pedal spring	1	
2	3.206.14.000140 BRAK-913-HD	A827 Accelerator pedal spring	1	
3	3.206.14.000147 BRAK-915-HD	A827 Accelerator pedal	1	
4	3.206.14.000148 BRAK-916-HD	A827 Brake pedal	1	
5	3.206.14.000149 BRAK-917-HD	A827 Brake pedal torsion spring	2	
6	3.206.14.000150 BRAK-918-HD	A827 Brake pedal axle	1	
7	3.206.14.000151 BRAK-919-HD	A827 Accelerator pedal axle	1	
8	3.206.14.000152 BRAK-920-HD	A827 Brake pedal bush	1	
9	3.206.14.000153 BRAK-921-HD	Brake switch contact plate	1	
10	3.206.14.000154 BRAK-922-HD	Brake switch fixing plate	1	
11	3.206.14.000155 BRAK-923-HD	Baffle	1	
12	3.206.14.000156 BRAK-924-HD	Brake pedal main body	1	
13	3.201.16.010209 BRAK-904-HD	A827 Brake pedal plastic sheet 1	1	
14	3.201.16.010210 BRAK-905-HD	A827 Brake pedal plastic sheet 2	1	
15	3.202.05.000014 BRAK-ECHD101	Accelerator-D	1	
16	3.201.16.010209 BRAK-904-HD	A827 Accelerator fixing plate	1	
17	3.205.01.010178 BRAK-906-HD	Inner hexagon screw	4	
18	3.205.01.020008 BRAK-907-HD	Flat gasket	4	

# Front cover parts diagram (1)

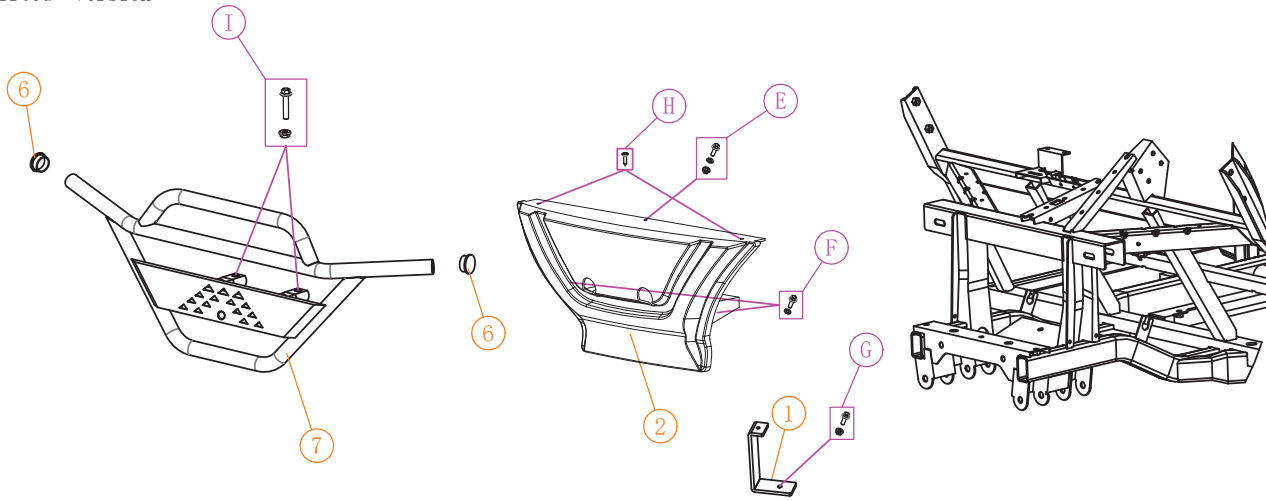




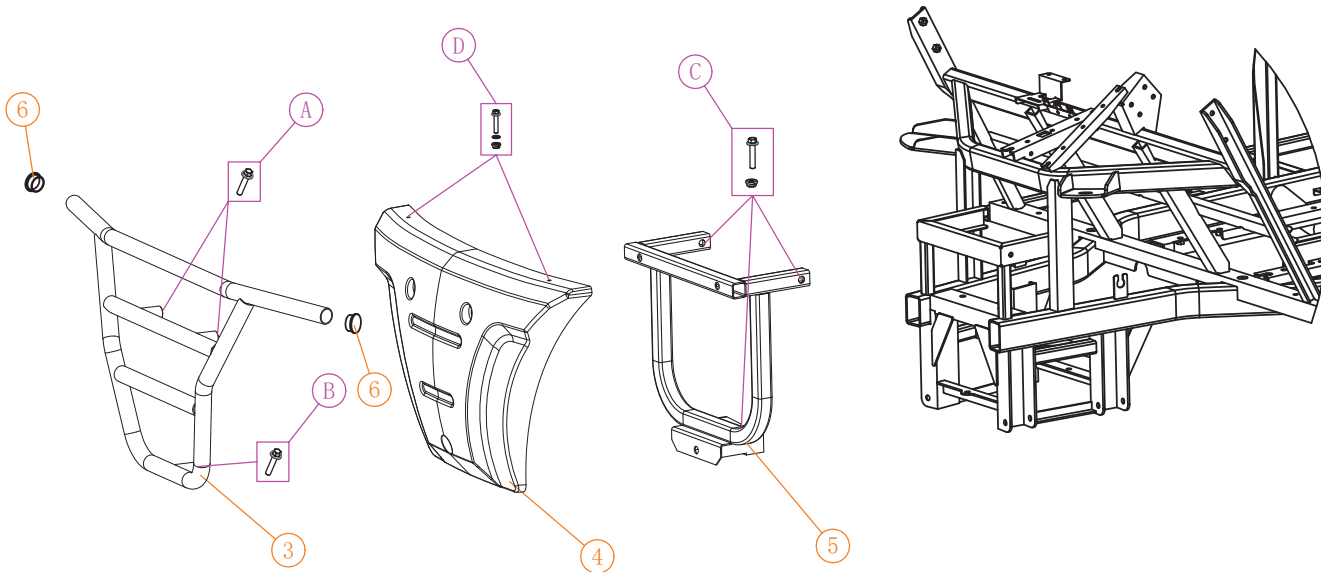




Non-lifted Version



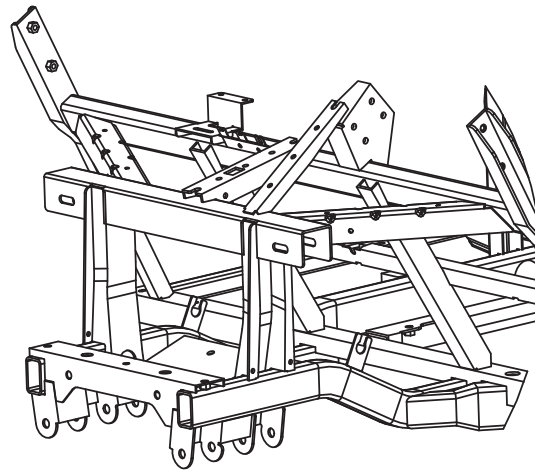
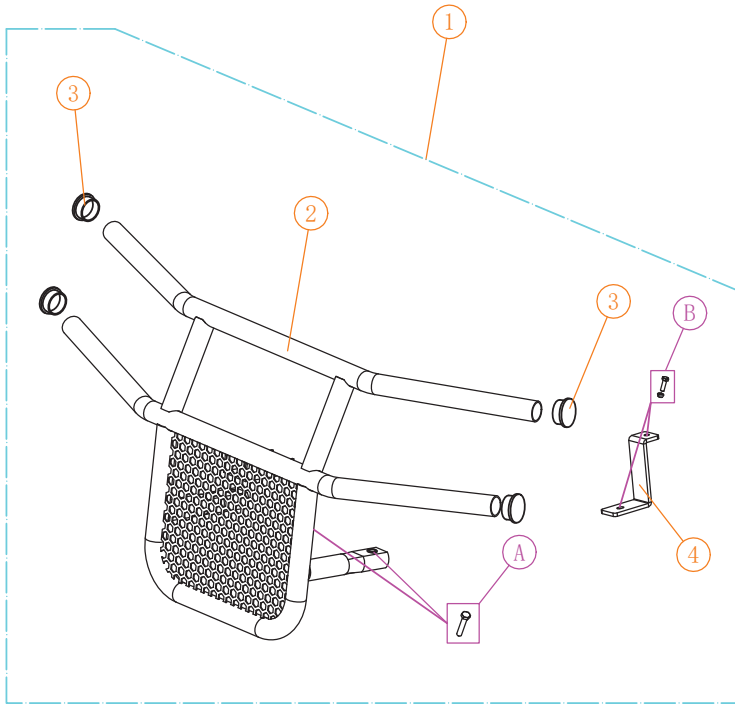
Lifted version



Front bumper(1)

NO:	Code	Name	QTY	Remark
1	2.03.103.100084 HW-277-IC	A627 front bumper mounting plate	1	
2	2.06.004.000002 BD-106-HD	A617 front bumper (open hole)	1	
3	2.03.105.100008 BD-ECHD414	B617.2G front bumper for lifted cart	1	
4	3.201.16.010004 BD-739-IC	A627.2G front bumper for lifted cart	1	
5	2.03.103.100012 BD-834-IC	A627.2G front bumper fixed	1	
6	3.201.13.000042 HW-302-IC	M2 handrail decoration cover	2	
7	2.03.105.000014 BD-102-HD	B617 Front iron bumper	1	
A	3.205.04.010021 HW-303-IC	(10*45) Flange screw	2	
B	3.205.04.010056 HW-304-IC	(10*20) Flange screw	1	
C	3.205.04.010017 HW-211-IC	(8*40) Flange screw	3	
	3.205.04.030003 HW-205-IC	(M8) Flange nut	3	
D	3.205.04.010004 HW-209-IC	(6*20) Flange screw	2	
	3.205.04.030002 HW-223-IC	(M6) Flange nut	2	
	3.205.01.020003 HW-260-IC	(1.5*6*18) Flat gasket	2	
E	3.205.04.010004 HW-209-IC	(6*20) Flange screw	1	
	3.205.04.030002 HW-223-IC	(M6) Flange nut	1	
F	3.205.01.020003 HW-260-IC	(1.5*6*18) Flat gasket	1	
	3.205.04.010005 HW-208-IC	(8*20) Flange screw	2	
G	3.205.01.020004 HW-207-IC	(1.2*8*20) Flat gasket	2	
	3.205.04.010005 HW-208-IC	(8*20) Flange screw	1	
H	3.205.04.030003 HW-205-IC	(M8) Flange nut	1	
	3.205.04.010085 HW-338-IC	(4.8*20) Stainless steel large flat head tapping screw	4	
I	3.205.04.010020 HW-502-HD	(8*45) Flange screw	1	
	3.205.04.030003 HW-205-IC	(M8) Flange nut	1	

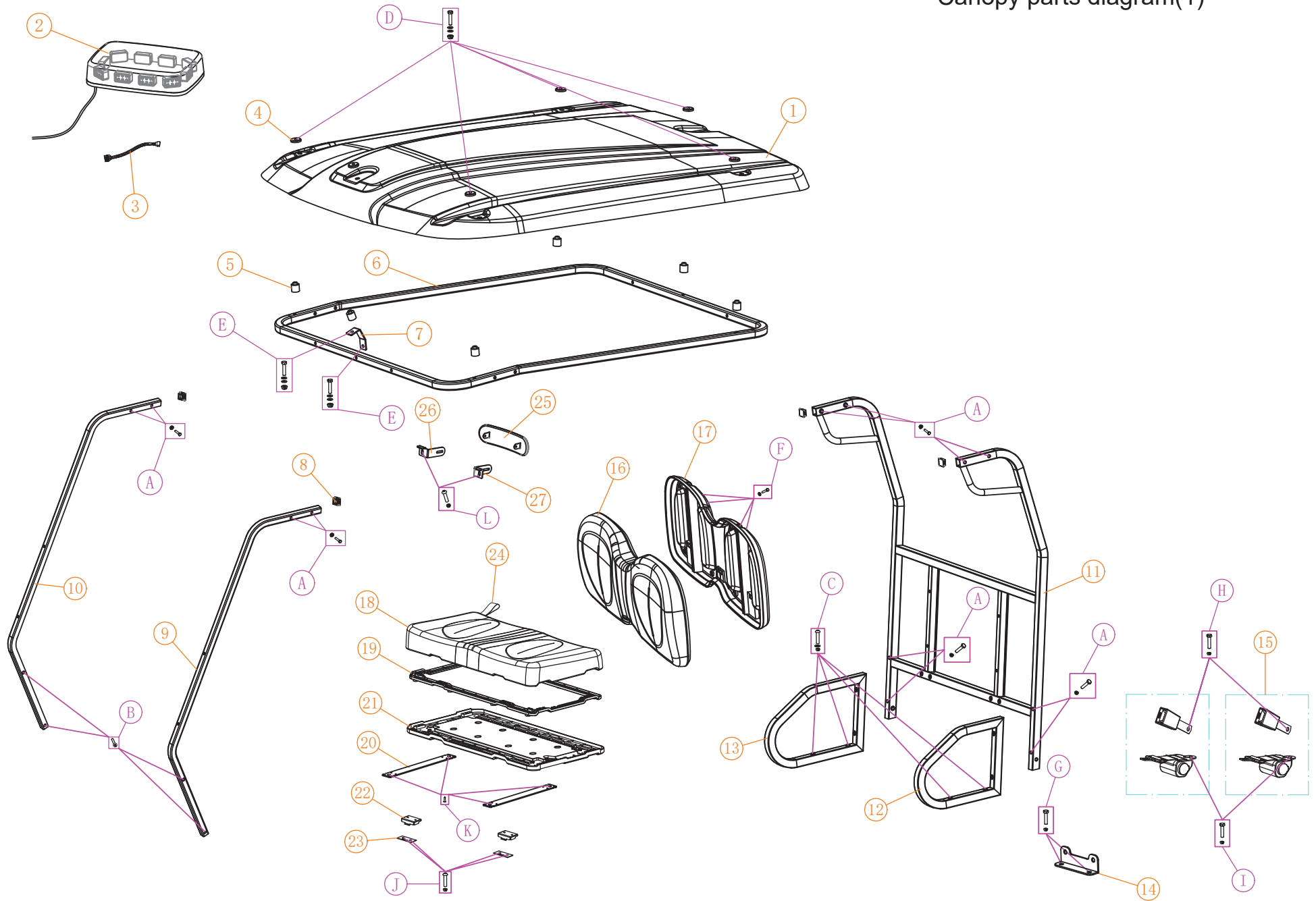
Non-lifted Version



Front bumper(2)

NO:	Code	Name	QTY	Remark
1	2.08.001.000080 BRG-702-IC-BK	ICON 617 Front iron bumper assembly(Pearl black)	1	
	2.08.001.000066 BRG-702-IC-PL	A617 Front Iron Bumper Assembly(Purple)	1	
	2.08.001.000071 BRG-702-IC-OG	A617 Front Iron Bumper Assembly (Orange)	1	
	2.08.001.000072 BRG-702-IC-LG	A617 Front Iron Bumper Assembly(Lemon Green)	1	
	2.08.001.000073 BRG-702-IC-SLV	A617 Front Iron Bumper Assembly (Silver)	1	
	2.08.001.000074 BRG-702-IC-DB	A617 Front Iron Bumper Assembly (Sky Blue)	1	
	2.08.001.000075 BRG-702-IC-PG	A617 Front Iron Bumper Assembly (Pearl Green)	1	
	2.08.001.000076 BRG-702-IC-PB	A617 Front Iron Bumper Assembly (Pearl Blue)	1	
	2.08.001.000077 BRG-702-IC-BUR	A617 Front Iron Bumper Assembly (Pearl Red)	1	
	2.08.001.000078 BRG-702-IC-CHAM	A617 Front Iron Bumper Assembly (Champagne Color)	1	
	2.08.001.000079 BRG-702-IC-WHT	A617 Front Iron Bumper Assembly (Pearl White)	1	
	2.08.001.000081 BRG-702-IC-RED	A617 Front Iron Bumper Assembly (Ferrari Red)	1	
	2.08.001.000082 BRG-702-IC-BG	ICON A617 Front iron bumper assembly(Blackish green)	1	
	2.08.001.000083 BRG-702-IC-YEL	ICON A617 Front iron bumper assembly(Yellow)	1	
2	2.03.102.200015 BRG-703-IC	A617 Front iron bumper (Pearl black)	1	Painted parts
3	2.04.102.400013 BRG-701-IC	M2 handrail decoration cover(Pearl black)	4	Painted parts
4	2.03.102.200029 BRG-704-IC	A617 Front bumper is fitted with a folding plate(Pearl black)	1	Painted parts
A	3.205.01.010090 HW-307-IC	(8*40) Outer hexagonal stainless steel screws	2	
B	3.205.01.010086 HW-262-IC	(8*25) Outer hexagonal stainless steel screws	2	
	3.205.01.030008 HW-299-IC	Stainless steel self-locking nut	2	

Canopy parts diagram(1)



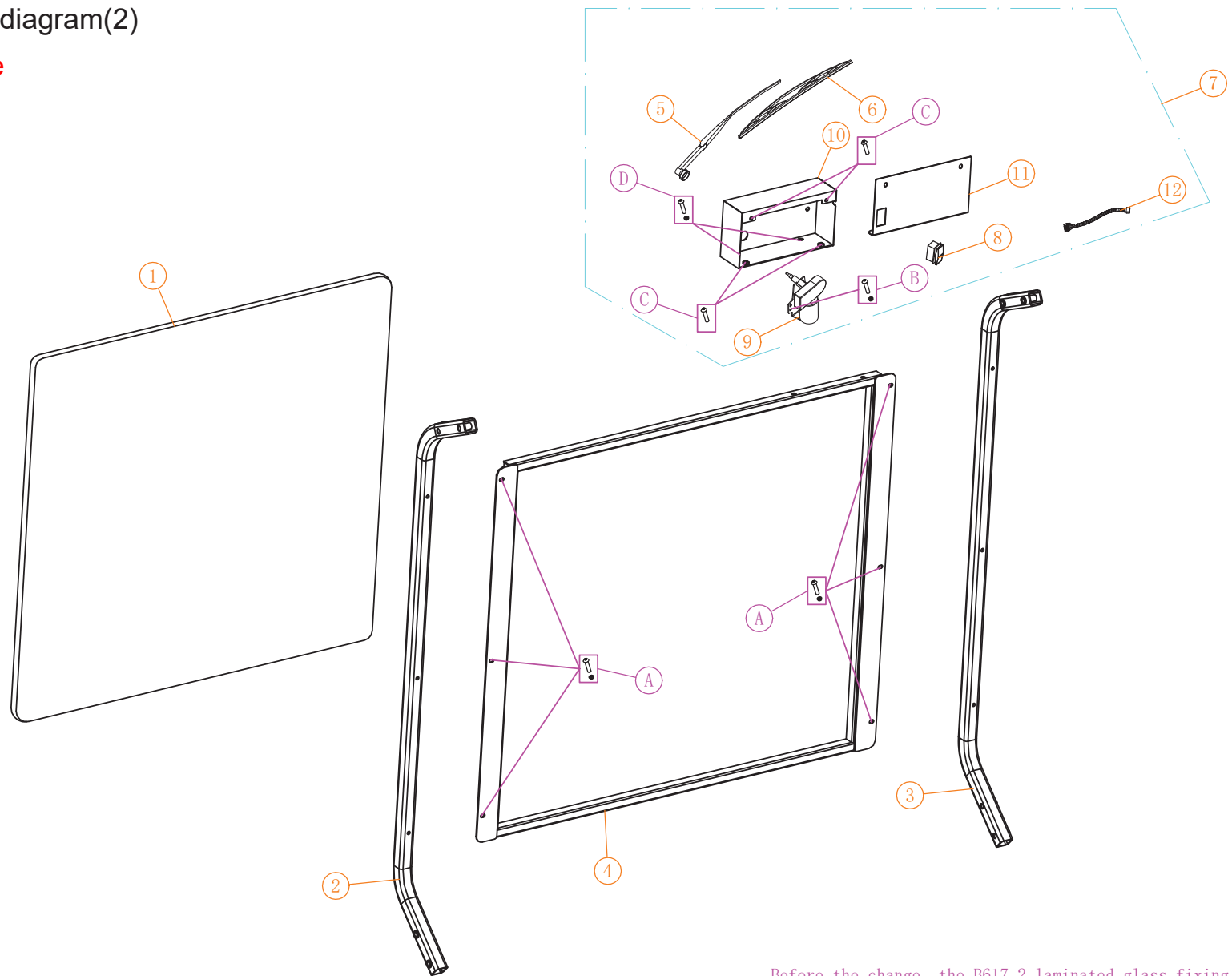


screw specifications					Canopy parts diagram(1)				
NO:	Code	Name	QTY	Remark	NO:	Code	Name	QTY	Remark
A	3.205.01.010106 HW-325-IC	(8*75) Stainless steel hexagon screw	12		1	3.201.02.010074 TOP-605-HD	A617.2 Top roof(Dome light hole)	1	Black double-sided leather pattern with ceiling light
	3.205.01.030008 HW-299-IC	(M8) Cross recessed large flat head tapping screws	12		2	3.202.01.030024 TOP-609-HD	Roof strobe warning light	1	Bearing a ceiling light hole ceiling
B	3.205.04.010024 HW-206-IC	(8*50) Flange screw	4		3	3.202.16.030210 TOP-610-HD	Roof stroboscopic warning light adapter	1	
C	3.205.01.010113 TOP-611-HD	(8*50) Hexagon socket round head bolt	4		4	3.201.02.010056 HW-373-IC	Top roof rubber collar	6	
	3.205.04.030003 HW-205-IC	(M8) Flange nut	4		5	3.201.02.010057 HW-374-IC	Top roof rubber column	6	
	3.205.01.020004 HW-207-IC	(1.2*8*20) Flat gasket	4		6	2.03.105.000060 TOP-ECHD701	B617.2HD canopy rack (aluminum material)	1	Matte black
D	3.205.01.010106 HW-325-IC	(8*75) Stainless steel hexagon screw	5		7	2.03.102.100013 TOP-ECHD700	A617.2 top roof support plate	1	Matte black
	3.205.01.030008 HW-299-IC	(M8) Cross recessed large flat head tapping screws	5		8	3.201.13.000036 TOP-ECHD703	30 aluminum square tube plugging cover	4	
	3.205.01.020004 HW-207-IC	(1.2*8*20) Flat gasket	10		9	2.03.105.000011 WS-200-HD	B617 front windshield bracket (without rearview mirror)L (Driver)	1	Matte black
E	3.205.01.010109 HW-306-IC	(8*45) Stainless steel hexagon screw	2		10	2.03.105.000012 WS-201-HD	B617 front windshield bracket (without rearview mirror)R (Passenger)	1	Matte black
	3.205.01.030008 HW-299-IC	(M8) Cross recessed large flat head tapping screws	2		11	2.03.105.000057 TOP-602-HD	B617.H8HD Top roof rear support	1	Matte black
	3.205.01.020004 HW-207-IC	(1.2*8*20) Flat gasket	4		12	2.03.105.000043 ST-208-HD	B617.2HD Seat cushion armrest(small)	1	Matte black
F	3.205.01.010172 HW-ECHD307	(6*50) Hexagon socket chamfer screw	8		13	2.03.105.000044 ST-209-HD	B617.2HD Seat cushion armrest(big)	1	Matte black
	3.205.01.020003 HW-260-IC	(1.5*6*18) Flat gasket	8		14	2.03.105.000026 ST-234-HD	B617.H8HD Seat belt fixing folding plate	1	Matte black
G	3.205.01.010086 HW-262-IC	(8*25) Stainless steel hexagon screw	2		15	3.201.16.050019 ST-909-IC	Automatic locking two-point safety belt	2	
	3.205.04.030003 HW-205-IC	(M8) Flange nut	2		16	3.203.02.130001 ST-751-IC	A627 Seat back-B	1	brown
H	3.205.01.010109 HW-306-IC	(8*45) Stainless steel hexagon screw	2		17	3.201.16.010113 ST-752-IC	A627 Back cover-B	1	
	3.205.01.030008 HW-299-IC	(M8) Stainless steel nut	2		18	3.203.01.150009 ST-229-HD	B617HD seat cushion (brown)	1	brown
I	3.205.01.010183 HW-ECHD308	(10*20) Stainless steel hexagon screw	2		19	3.201.16.010131 ST-222-HD	827 cushion frame	1	injection model
	3.205.01.030019 HW-ECHD309	(M10*1.5) Stainless steel nut	2		20	2.03.104.100133 ST-205-HD	827 cushion reinforced folding plate	2	Powder-coated parts
J	3.205.01.010076 HW-511-HD	(6*20) Stainless steel hexagon screw	4		21	3.201.16.010130 ST-221-HD	827 cushion floor	1	injection model
	3.205.04.030002 HW-223-IC	(M6) Flange nut	4		22	2.01.103.000022 HW-331-IC	A627 Seat Cushion hinge up	2	
K	3.205.01.010188 ST-232-HD	(5*16) Stainless steel large flat head tapping screw	16		23	2.01.103.000023 HW-282-IC	A627 Seat Cushion hinge down	2	
L	3.205.01.010077 HW-ECHD306	(6*40) Stainless steel hexagon screw	2		24	3.201.16.010011 ST-763-IC	A627 foldable rear seat cushion drawstring	1	
	3.205.01.030007 HW-310-IC	(M6) Cross recessed large flat head tapping screws	2		25	3.201.07.000004 TOP-608-HD	Curved mirror	1	

26	2.03.105.000013 TOP-601-HD	Middle mirror fixing base/R (Passenger)	1	
27	2.03.105.000010 TOP-600-HD	Middle mirror fixing base/L (Driver)	1	

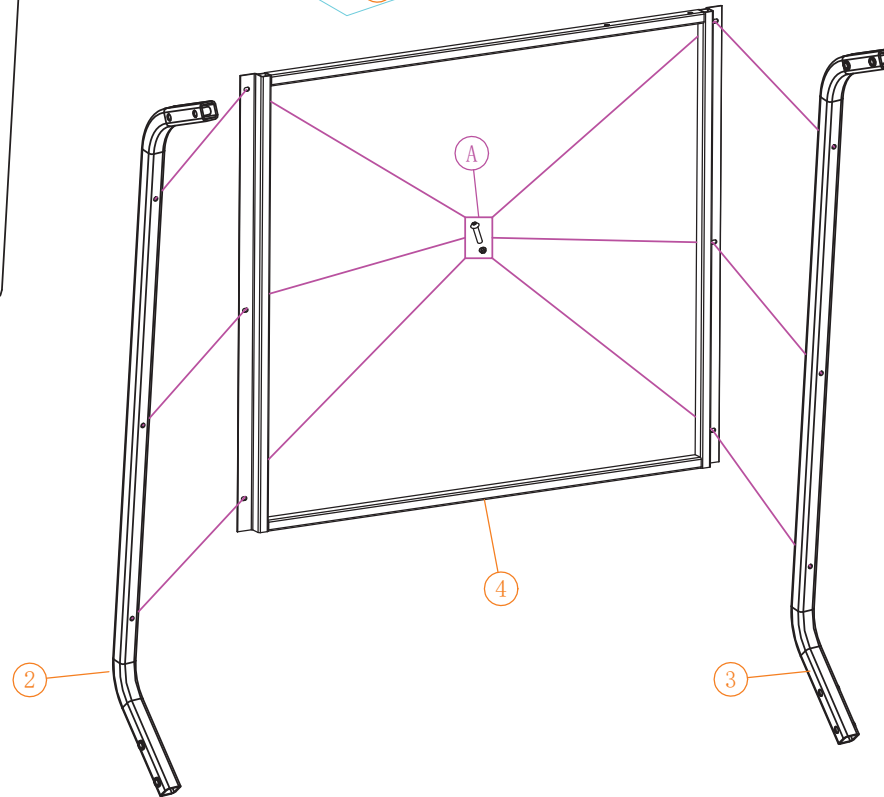
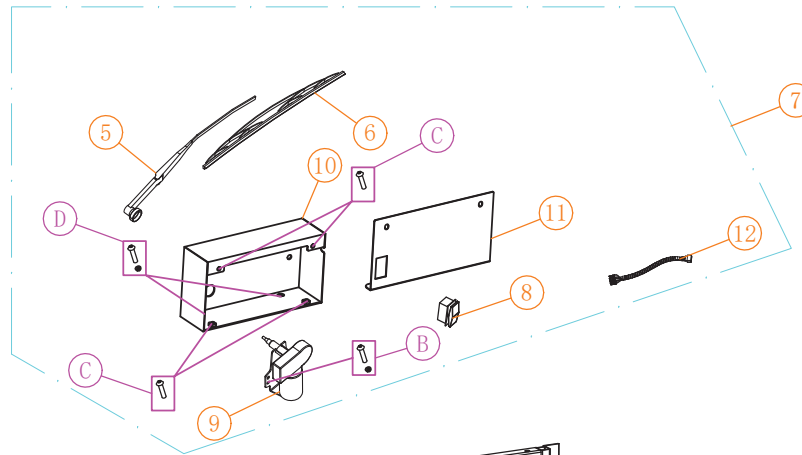
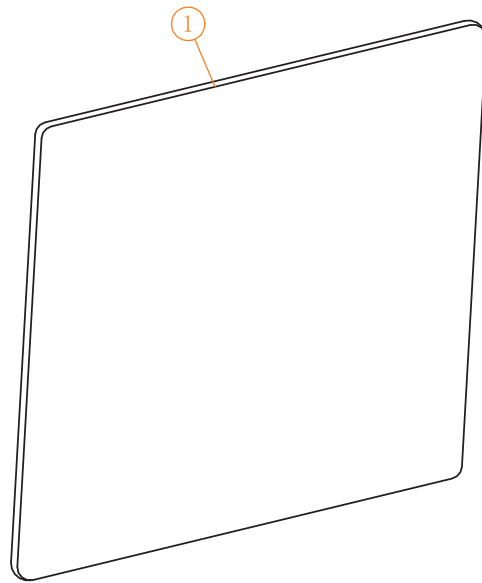
# Canopy parts diagram(2)

before change



Before the change, the B617.2 laminated glass fixing frame was installed on the left/right rear end of the B617 windshield bracket (without rearview mirror).

# After the change

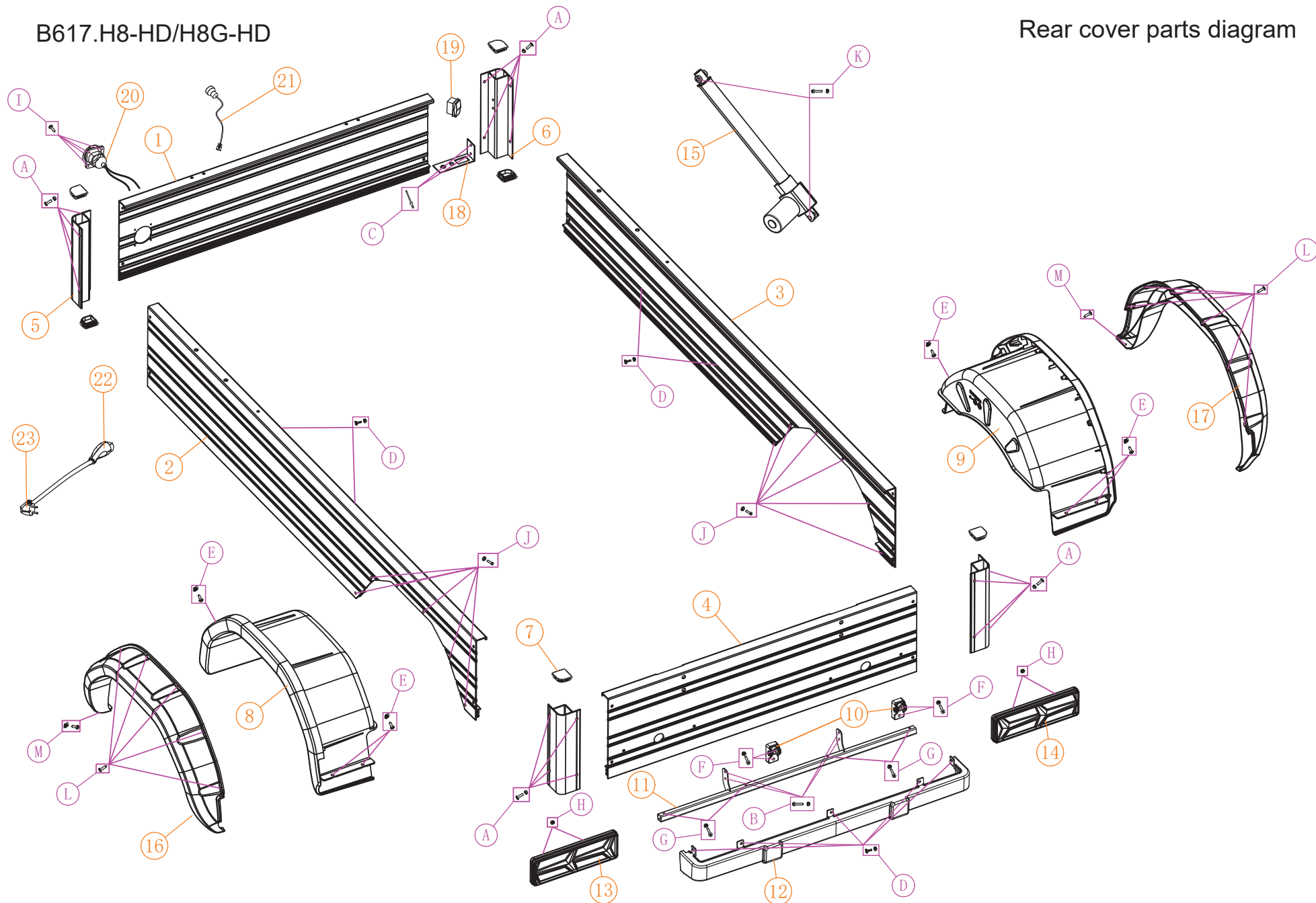


After the change, the B617,2 laminated glass fixing frame is installed on the front end of the left/right side of the windshield bracket (without rearview mirror) between B617.



B617.H8-HD/H8G-HD

Rear cover parts diagram

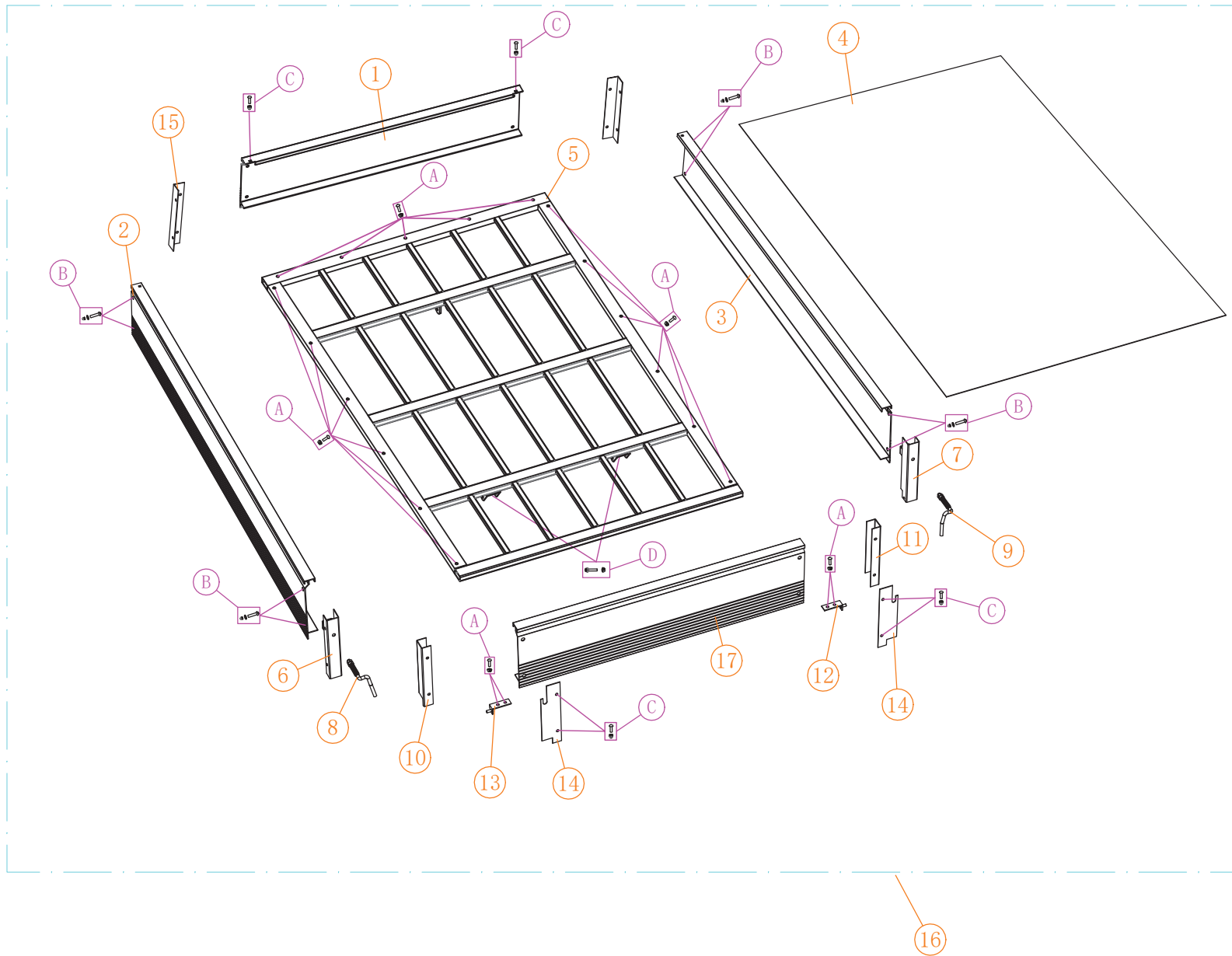




screw specifications				
NO:	Code	Name	QTY	Remark
A	3.205.01.010022 HW-504-HD	(6*16) Stainless steel flat head Phillips screw	16	
	3.205.04.030002 HW-223-IC	(6mm) Flange nut	16	
B	3.205.04.010003 HW-219-IC	(6*16) Flange screw	4	
	3.205.04.030002 HW-223-IC	(6mm) Flange nut	4	
C	3.205.06.000021 HW-512-HD	(5*20*16) Aluminum pull nail	2	
D	3.205.03.010007 HW-ECHD302	(M6*16) All sides screw	9	
	3.205.04.030002 HW-223-IC	(6mm) Flange nut	9	
E	3.205.04.010077 HW-228-IC	(5*16) Cross recessed large flat head tapping screw	6	
	3.205.03.030018 HW-278-IC	(M5*13*20) Clip nut	6	
F	3.205.01.010106 HW-325-IC	(8*75) Stainless steel outer hexagonal screw	2	
	3.205.01.010109 HW-306-IC	(8*45) Stainless steel outer hexagonal screw	2	
	3.205.04.030003 HW-205-IC	(8mm) Flange nut	4	
G	3.205.04.010016 HW-345-IC	(6*40) Flange screw	4	
	3.205.04.030002 HW-223-IC	(6mm) Flange nut	4	
H	3.205.01.030006 HW-501-HD	(5mm) Stainless steel self- locking nut	4	
I	3.205.05.010001 HW-503-HD	(5*25) Cross recessed large flat head tapping screw	4	
J	3.205.01.010145 HW-500-HD	(5*20) Hexagon socket flat round head screw	12	
	3.205.01.020007 HW-316-IC	(1*5*12) Flat gasket	12	
K	3.205.04.010029 HW-513-HD	(10*60) Flange screw	2	
	3.205.04.030004 HW-239-IC	(10mm) Flange nut	2	
L	3.205.01.010184 HW-514-HD	(5*16) Stainless steel round head drilling tail tapping screw	12	
M	3.205.04.010077 HW-228-IC	(5*16) Cross recessed large flat head tapping screws	2	

## B617.H8-HD/H8G-HD

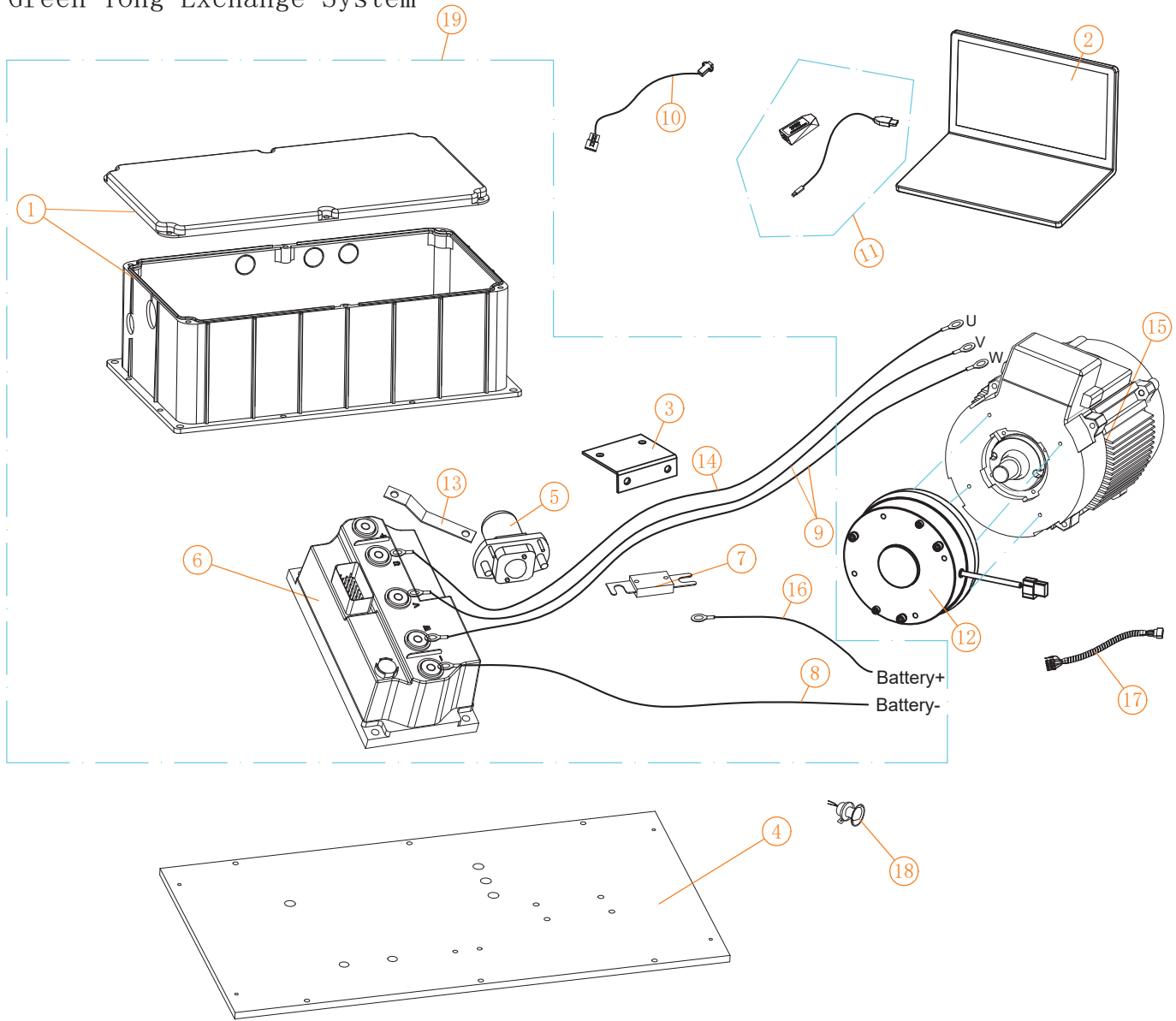
Rear body parts				
NO:	Code	Name	QTY	Remark
1	2.01.105.000006 BD-100-HD	B617.H8HD rear body front backboard	1	Overall aluminum seal
2	2.06.003.000092 BD-134-HD	B617.H8HD rear body backboard/L (Driver)	1	Overall aluminum seal
3	2.06.003.000093 BD-135-HD	B617.H8HD rear body backboard/R (Passenger)	1	Overall aluminum seal
4	2.01.105.000007 BD-136-HD	B617.H8HD Cover Aluminum Seal/Post	1	Overall aluminum seal
5	2.01.105.000010 ST-200-HD	B617.H8HD Front corner of rear cover/L (Driver)	3	
6	2.01.105.000011 BD-137-HD	B617.H8HD Front corner of rear cover/R (passenger)	1	
7	3.201.13.000037 ST-219-HD	<b>827.H8</b> Side Wall Column Cover	6	
8	3.201.06.000061 BD-109-HD	B617.H8HD rear body/L (Driver)	1	injection model
9	3.201.06.000062 BD-110-HD	B617.H8HD rear body/R (passenger)	1	injection model
10	3.201.16.010109 BD-115-HD	Container fix back	2	injection model
11	2.03.104.100021 BD-138-HD	827.H8 back bumper bracket	1	
12	3.201.16.010060 BD-113-HD	827.H8 bumper	1	injection model
13	3.202.01.020023 BD-121-HD	GDS taillight/L (Driver)	1	
14	3.202.01.020022 BD-120-HD	GDS taillight/R (Passenger)	1	
15	3.206.18.000045 BD-ECHD433	370 Electrical lift rod	1	
16	3.201.06.000059 BD-139-HD	B617.H8HD Rear wheel trims/L (Driver)	1	lifted
17	3.201.06.000060 BD-140-HD	B617.H8HD Rear wheel trims/R (Passenger)	1	lifted
18	2.03.105.000025 BD-141-HD	B617.H8HD Two switch fixing plate	1	
19	3.202.02.010026 CHSS-209-HD	Curva switch (three -speed)	1	
20	3.202.09.000095 CHGR-704-IC	<b>ICON</b> Charger receptacle	1	Contains copper core, Special plug-in
21	3.202.01.010037 CHGR-705-IC	Charging indicator	1	12V red and green two-color LED
22	3.202.09.000076 CHGR-708-IC	Charger plug	1	American model 32A
23	3.202.09.000126 CHGR-709-IC	(KE-02) Charger power line	1	







# Green Tong Exchange System

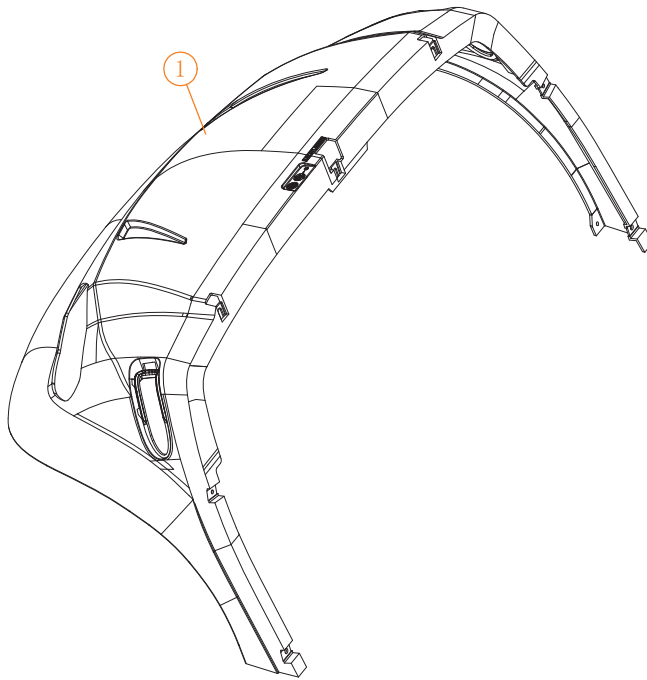


## AC system(2)

NO:	Code	Name	QTY	Remark
1	3.201.14.000046 BTRY-ECHD100	Controller cover top-B	1	
2	3.202.16.030129 BTRY-714-IC	Controller handheld unit	1	
3	2.03.101.100099 HW-367-IC	Sensor fixed	1	
4	2.06.002.000009 HW-368-IC	LT heatsink board-A	1	48V350A
	2.06.002.000010 HW-369-IC	LT heatsink board-B	1	72V450A
5	3.202.14.000001 SOLE-701-IC	48V sensor	1	ZJ200A
6	3.202.03.000032 CNTR-713-IC	ICON communication controller 72V/450A	1	Match (LT-4801) wire beam
7	3.202.16.030075 ELE-714-IC	Fuse 300A	1	
8	2.06.001.000029 BTRY-711-IC	Battery connection line (900mm)	1	25/900mm
9	2.06.001.000030 BTRY-300-HD	Battery connection line (1300mm)	2	25/1300mm B617.H8-HD
	2.06.001.000032 BTRY-301-HD	Battery connection line (1500mm)	2	25/1500mm B617.H8G-HD
10	2.08.002.000001 CBL-705-IC	ICON programing CANUSB cable	1	
11	3.202.16.030125 CBL-706-IC	LT programing cable without CANUSB	1	Connected to the electronic control without CANUSB
12	3.206.14.000080 ELE-605-HD	Electromagnetic brake	1	
13	2.06.001.000006 HW-370-IC	Copper bar F	1	72V450A Electronic control
14	2.06.001.000031 BTRY-302-HD	Battery cable (1400mm)	1	25/1400mm B617.H8-HD
	2.06.001.000033 BTRY-303-HD	Battery cable (1600mm)	1	25/1600mm B617.H8G-HD
15	3.202.07.000005 MOTOR-702-IC	Efficient three -phase asynchronous motor	1	5KW 19 teeth
16	2.06.001.000033 BTRY-303-HD	Battery cable (1600mm)	1	25/1600mm
17	3.202.04.000045 BRAK-666-IC	617 Auxiliary harness for electromagnetic brake	1	
18	3.202.10.000008 ELE-708-IC	S14 Reversing voice buzzer	1	
19	2.08.002.000017 ELE-729-IC	Bicycle ICON Electric Control assembly (450A without wire beam) -b	1	







B617 Front Cover Paint color detailed

NO:	Code	Name	Remark
1	2.04.105.200001 BD-142-HD	B617 front cover (spray paint)	(Shiny white)
	2.04.105.200002 BD-143-HD		(Champagne)
	2.04.105.200003 BD-144-HD		(Shiny black)
	2.04.105.200004 BD-145-HD		(Ferrari red)
	2.04.105.200005 BD-146-HD		(Shiny blue)
	2.04.105.200006 BD-147-HD		(Azure)
	2.04.105.200007 BD-148-HD		(Engineering yellow)
	2.04.105.200008 BD-149-HD		Pantone 165 C/Orange
	2.04.105.200009 BD-150-HD		(Pearl silver)
	2.04.105.200010 BD-151-HD		(Lemon green)
	2.04.105.200011 BD-152-HD		Pantone 267 C/purple
	2.04.105.200012 BD-153-HD		(Shiny green)
	2.04.105.200013 BD-154-HD		(Shiny red)
	2.04.105.200014 BD-155-HD		RAL 7012/Xuanwu Lime
	2.04.105.200015 BD-156-HD		Pantone 574 C/Green
	2.04.105.200016 BD-157-HD		RAL 5021/Ice Blue
	3.201.02.010059 BD-108-HD	B617 front cover (injection molding part)	(beige)