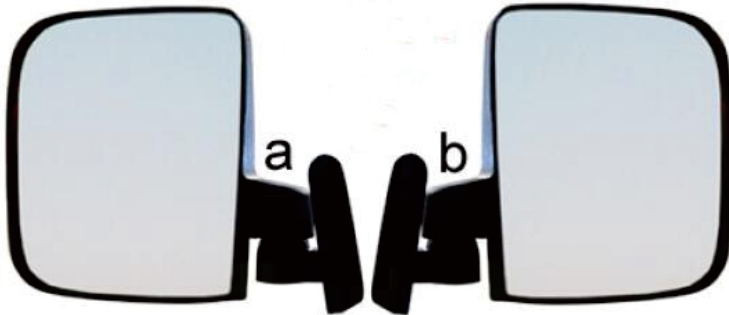




# Side Mirrors with LED Indicators

## Installation Instructions



### Package Contents

- (a) Driver Side Mirror x 1
- (b) Passenger Side Mirror x 1
- (c) Mounting Hardware Pack x 1
- (d) T-Tap Wire Connector x 4
- (e) Spade Connector x 4
- (f) Installation Instruction Sheet x1



### Caution:

Please read through the instructions carefully. Remove the system's positive and negative connections from the battery or battery pack before you carry out the installation for this product. This kit is designed for operation under 12 V only. Operating this kit at a higher voltage will void the warranties. Make sure each drill location is at the right site before you drill it. Please note that installer is responsible for damage resulted from improper installation (i.e. drilling into a wiring harness, battery, fuel tank etc.)

### Tools Needed for Installation

- Drill and Drill Bits (1/8", 3/8")
- Philips Head Screwdriver
- Fish Tape or similar tools
- Measuring Tape
- Thin Round File and Sand Paper
- Pliers

## Before The Installation

- (1) Turn the key of your vehicle to OFF.
- (2) This product should be used on Electric Vehicles only. If your vehicle has a TOW/RUN switch, switch it to the TOW position.
- (3) Engage the parking brake.
- (4) Remove the system's positive and negative connections from the battery or battery pack.

## Installation Steps

1

Hold the driver side mirror to the outside of the driver side front strut to make sure the best mounting location for the mirror as shown in Fig (1).

Note: If there is a windshield installed on your vehicle please take consideration of the location of windshield as well when you determine the best location for the mirror.

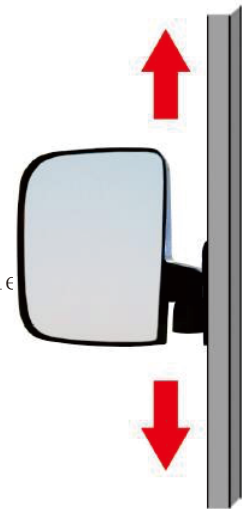


Fig (1)



Fig (2)

2

With the mirror in the correct position, use a pencil to mark the location of the mounting holes on the driver side front strut as shown in Fig (2). Put away the mirror first for the later installation.

3

Use an 1/8" drill bit to drill the top and bottom marked hole locations on the driver side strut as shown in Fig (3). Do not drill completely through the strut. Only drill through the first wall.

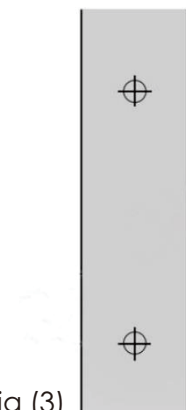


Fig (3)

4

Use a tape measure and a pencil to mark a third hole location 3/4" above the bottom hole. After that, use a 3/8" drill bit to drill a hole at the marked location as shown in Fig (4). Do not drill completely through the strut. Only drill through the first wall. Use a thin round file and sand paper to grind the rough surface smooth.

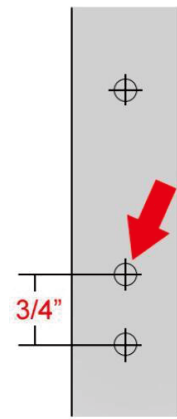


Fig (4)

5

Access the bottom opening in the driver side front strut. Please note that this will vary depending on different vehicles. Use fish tape to carefully run the wires on the driver side mirror through the 3/8" hole in the strut to the opening in the bottom of the strut as shown in Fig (5).

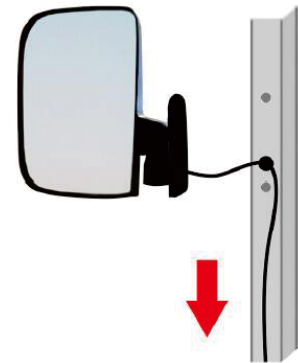


Fig (5)

6

Use the included mounting hardware to mount the mirror onto the strut as shown in Fig (6). Do not overtighten the mounting screws.



Fig (6)

7

Repeat the steps 1-9 for the installation of passenger side mirror.

8

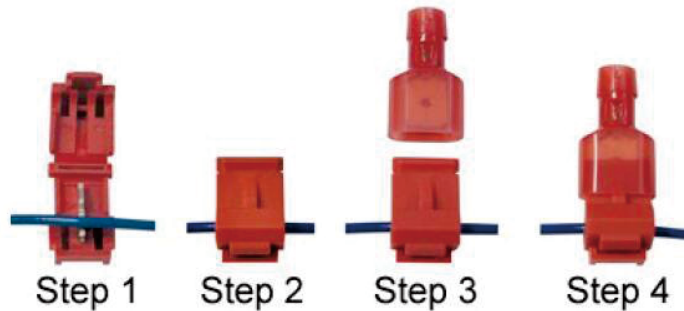
Run the wires from both mirrors to the vehicle's wire harness. After that Crimp a spade connector to both mirror's wires. And then locate the wires running to the driver side front marker light on the vehicle's light kit wire harness.

Note: The wire colors may vary depending on different brands.

9

- (1) With a T-Tap wire connector, connect the black -12V(negative) ground wire from the driver side mirror with the black -12V ground wire running to the driver side front marker light on the vehicle's light kit wire harness.
- (2) With a T-Tap wire connector, connect the red +12V(positive) wire from the driver side mirror with the yellow + 12V wire running to the driver side front marker light on the vehicle's light kit wire harness.

T-Tap Connector Installation Diagram



Note:

- (1) Use pliers to close connector in Step 2
- (2) The connectors will self-tap into the wire mid-span without cutting or splicing the wire.
- (3) If you need to adjust the mirror, do not overtighten the adjusting nut. Doing so may damage the wires.

10

Reconnect the system's positive and negative connections to the battery or battery pack after all lights and optional accessories have been installed.

11

Set the vehicle in the RUN position (if applicable) and turn the key ON. Use the turn signal to test the function of the mirrors.



The installation of the mirrors is finished now.  
Please enjoy using it safely.